

abitex

angel combo 08120



fireproof



imo-med



standard 100



year guarantee

abitex - angel combo - 08120

abitex

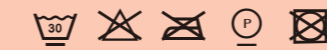
abitex srl

headquarter
via del cristo 84
33044 manzano
ud - italy

legal address
via enrico fermi 9
35010 cadoneghe
pd - italy

t +39 0432 746060
f +39 0432 746035
cf/p. iva/vat IT04453620280
www.abitex.eu - info@abitex.eu

angel combo 08120



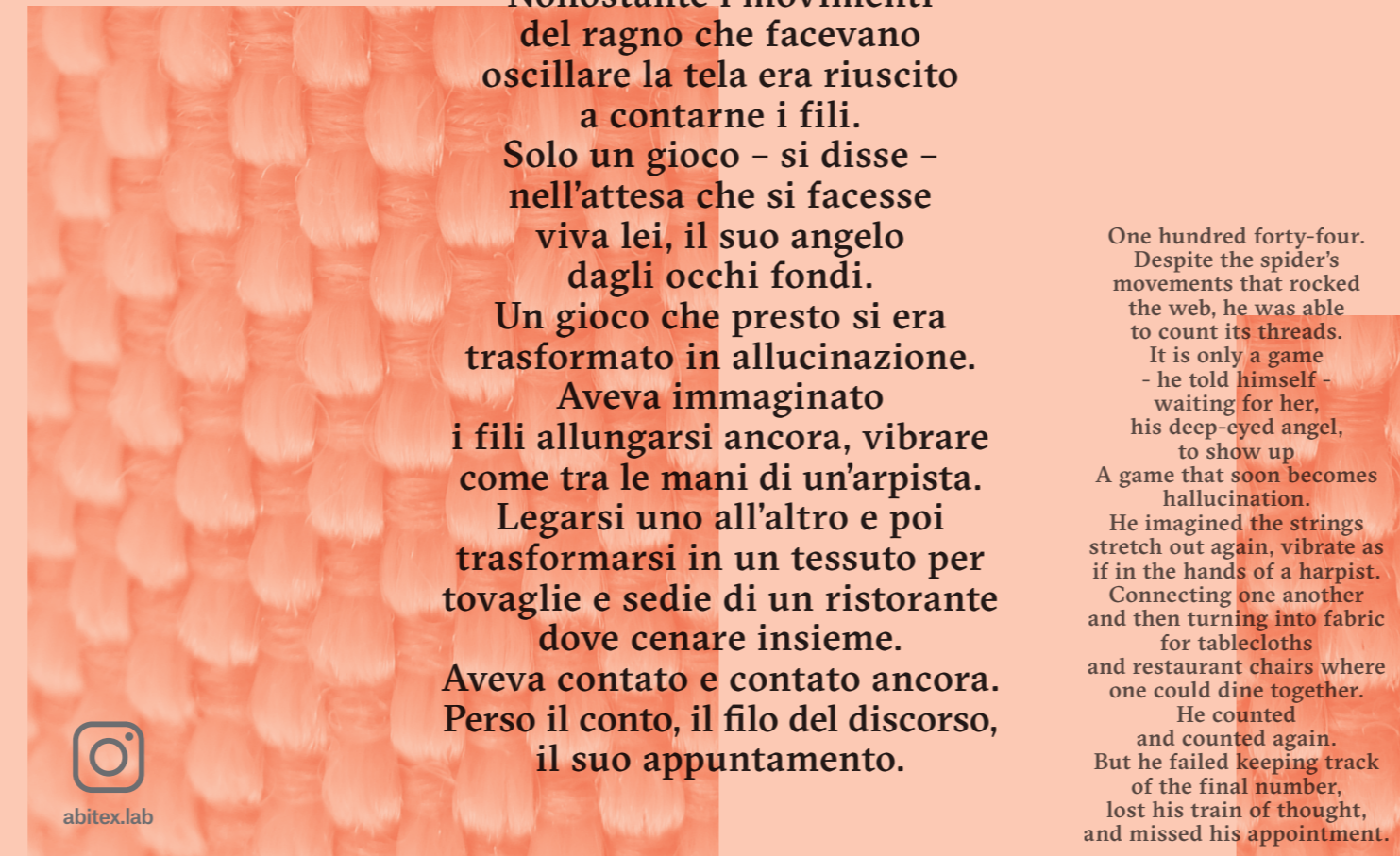
IT
codice doganale
54072011.
utilizzo
tende, imbottiti.
caratteristiche
100% polipropilene, altezza cm ± 140, peso ± 350 gr/m².
tintura
il prodotto è tinto in massa.
lunghezza pezze
circa 35 mt., disponibile anche al taglio con maggiorazione.
abrasione
> 50.000 cicli, ISO 12947-2.
solidità alla luce
5, ISO 105 B02.
solidità allo sfregamento
secco 5, umido 4/5, ISO 105 X12.
resistenza alla cucitura
ordito 4 mm, trama 2 mm, ISO 13936-2.
pilling
4-5, ISO 12945-2.
sostenibilità
oeko-tex.
resistenza al fuoco
1M - UNI 9175; EN 1021 part 1/2; NF-D 60 013 (AM 18); BS 5852 crib 5; NFPA 260 Class 1; California TB 117-2013; IMO MED 3.20 - FTP Code 307 part 8.
attenzione
sono ammesse leggere differenze di colore tra differenti partite, le schede tecniche vengono costantemente aggiornate sul sito, pertanto vi invitiamo a verificare online i dati del prodotto su www.abitex.eu.

DE
zolltarifnummer
54072011.
verwendung
vorhänge, polstermöbel.
merkmale
100% polypropylen, breite cm ± 140, gewicht ± 350 gr/m².
färbung
färbung in massa.
länge des tuchs
ca. 35 lm., auch geschritten gegen aufpreis erhältlich.
abriebbeständigkeit
> 50.000 zyklen, ISO 12947-2.
farbbeständigkeit gegenüber licht
5, ISO 105 B02.
reibecheit
trocken 5, feucht 4/5 mm, ISO 105 X12.
nahtschibewiderstand
kette 4 mm, schuss 2 mm, ISO 13936-2.
pflegeverhalten
4-5, ISO 12945-2.
nachhaltigkeit
oeko-tex.
feuerbeständigkeit
1M - UNI 9175; EN 1021 part 1/2; NF-D 60 013 (AM 18); BS 5852 crib 5; NFPA 260 Class 1; California TB 117-2013; IMO MED 3.20 - FTP Code 307 part 8.
achtung
leichte farunterschiede zwischen den einzelnen partien sind, wir empfehlen, die technischen datenblätter für alle produkte unter www.abitex.eu zu prüfen.

ES
código aduanero
54072011.
utilización
cortinas, muebles tapizados.
características
100% polipropileno, ancho ± 140 cm, peso ± 350 gr/m².
tinte
tintura en masa.
largo de las piezas
aprox. 35 m., también disponible al corte con recargo.
resistencia a la abrasión
> 50.000 ciclos martindale, ISO 12947-2.
solidez de los colores a la luz
5, ISO 105 B02.
solidez al frote
seco 5, húmedo 4/5, ISO 105 X12.
resistencia al deslizamiento de hilos
ordimbre 4 mm, trama 2 mm, ISO 13936-2.
formación de bolitas
4-5, ISO 12945-2.
sostenibilidad
oeko-tex.
resistencia al fuego
1M - UNI 9175; EN 1021 part 1/2; NFPA 260 Class 1; California TB 117-2013; IMO MED 3.20 - FTP Code 307 part 8.
atención
son admisibles ligeras diferencias de color entre partidas diversas, se aconseja verificar las fichas técnicas de todos los productos en www.abitex.eu.

ZH
海关编号
54072011.
用途
窗帘, 填充物.
特性
100% 聚丙烯, 高度 ± 140 cm, 重量 ± 350 gr/m².
染色
浆液染色布.
布匹长度
约35米, 也可提供付费切割.
耐磨性能
> 50,000 转, ISO 12947-2.
耐光色牢度
5, ISO 105 B02.
耐摩擦色牢度
干摩擦 5, 湿摩擦 4/5, ISO 105 X12.
缝线滑移
经向 4 mm, 纬向 2 mm, ISO 13936-2.
起球
4-5, ISO 12945-2.
可持续性
oeko-tex.
耐火性能
1M - UNI 9175; EN 1021 part 1/2; NFPA 260 Class 1; California TB 117-2013; IMO MED 3.20 - FTP Code 307 part 8.
注意
不同批次之间允许存在轻微色差, 请登录 www.abitex.eu 网站参考所有产品的相关技术数据表.

RU
таможенный кодекс
54072011.
использование
шторы, мягкая мебель.
характеристики
100% полипропилен, высота в см ± 140, вес ± 350 г/м².
краситель
продукт окрашивают насылью.
длина детали
о 35 погонных метрах, также доступны в разрезе при условии дополнительной оплаты.
устойчивость к изнашиванию
> 50.000 циклов, ISO 12947-2.
светостойкость
5, ISO 105 B02.
устойчивость к истиранию
сухой 5, влажный 4/5, ISO 105 X12.
прочность швов
основа 4 мм, уток 2 мм, ISO 13936-2.
пиллинг
4-5, ISO 12945-2.
устойчивость
oeko-tex.
огнестойкость
1M - UNI 9175; EN 1021 part 1/2; NFPA 260 Class 1; California TB 117-2013; IMO MED 3.20 - FTP Code 307 part 8.
внимание
допускаются незначительные различия в цвете между различными частями. мы рекомендуем проверить технические паспорта всех продуктов www.abitex.eu.



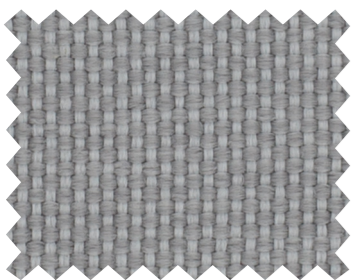
Centoquarantaquattro.
Nonostante i movimenti
del ragno che facevano
oscillare la tela era riuscito
a contarne i fili.
Solo un gioco - si disse -
nell'attesa che si facesse
viva lei, il suo angelo
dagli occhi fondi.
Un gioco che presto si era
trasformato in allucinazione.
Aveva immaginato
i fili allungarsi ancora, vibrare
come tra le mani di un'arpista.
Legarsi uno all'altro e poi
trasformarsi in un tessuto per
tovaglie e sedie di un ristorante
dove cenare insieme.
Aveva contato e contato ancora.
Perso il conto, il filo del discorso,
il suo appuntamento.

One hundred forty-four.
Despite the spider's
movements that rocked
the web, he was able
to count its threads.
It is only a game
- he told himself -
waiting for her,
his deep-eyed angel,
to show up
A game that soon becomes
hallucination.
He imagined the strings
stretch out again, vibrate as
if in the hands of a harpist.
Connecting one another
and then turning into fabric
for tablecloths
and restaurant chairs where
one could dine together.
He counted
and counted again.
But he failed keeping track
of the final number,
lost his train of thought,
and missed his appointment.



abitex.lab

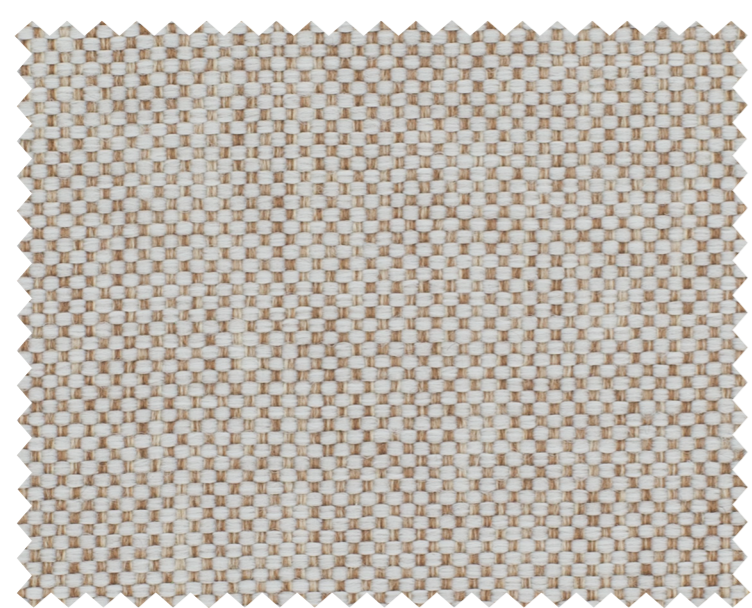
abitex
angel combo - 08120



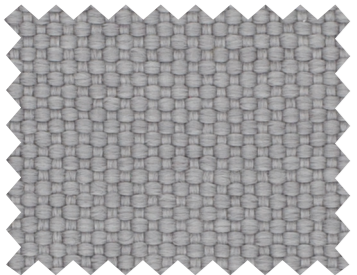
101



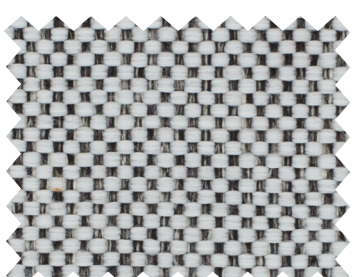
111



102



600



601



401



400



201



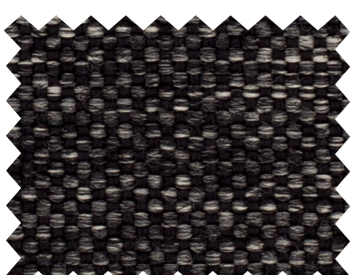
407



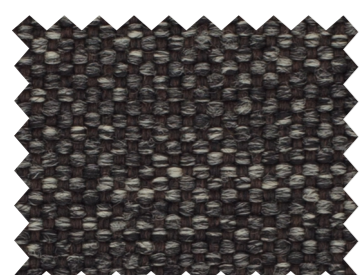
402



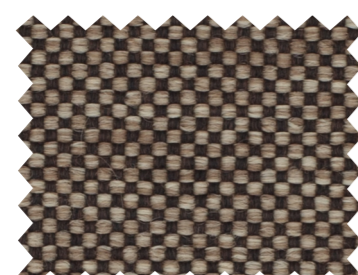
404



203



408



403



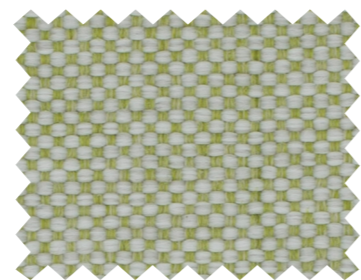
200



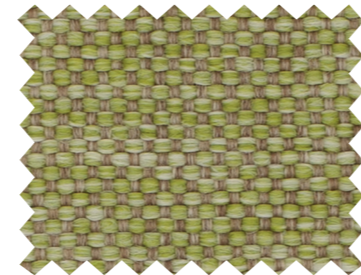
406



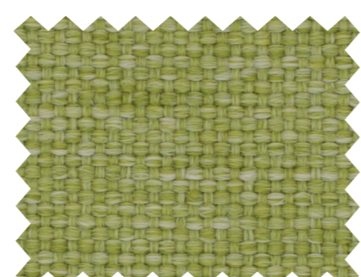
405



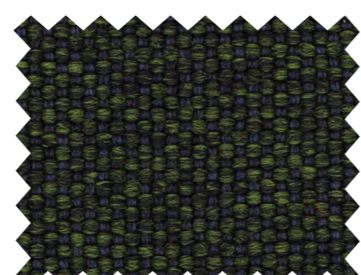
801



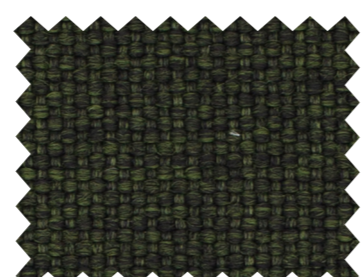
803



800



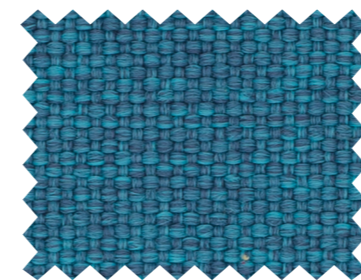
703



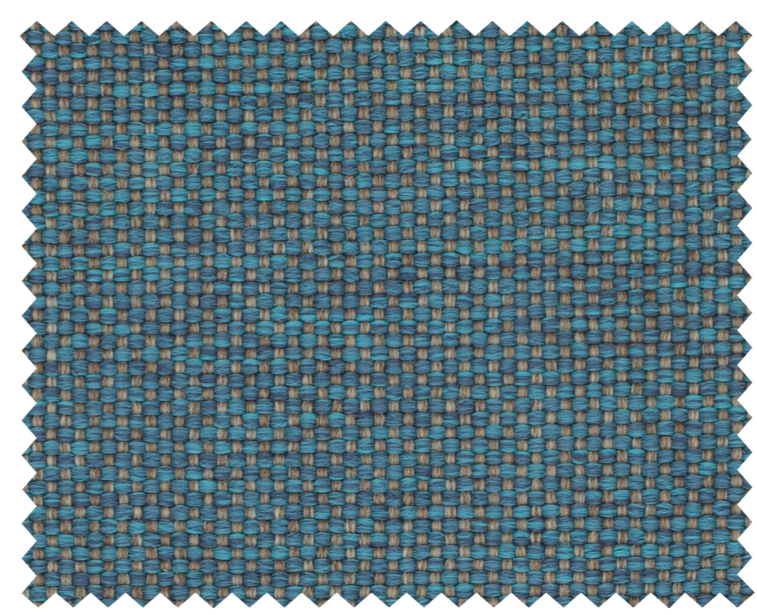
802



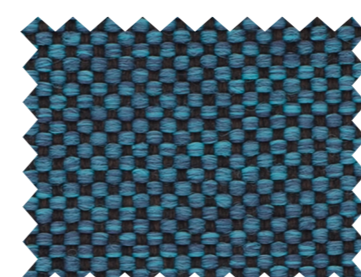
702



700



706



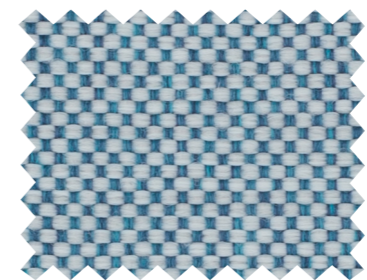
705



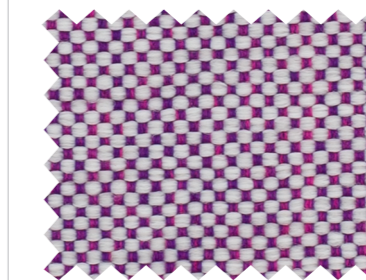
707



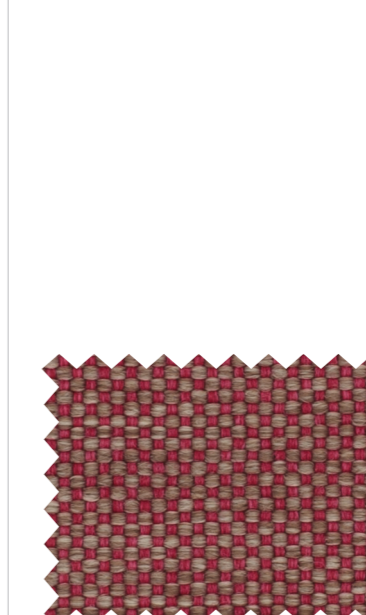
311



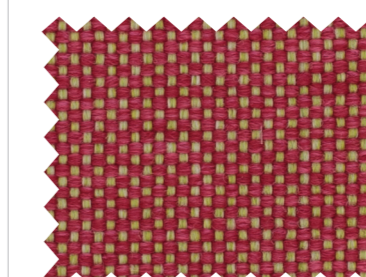
701



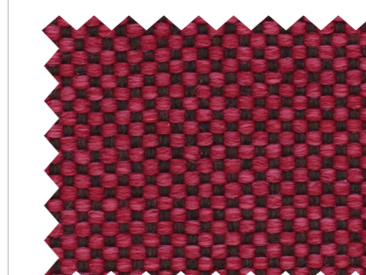
001



302



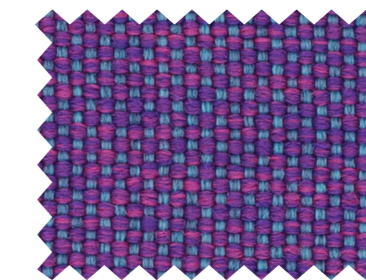
303



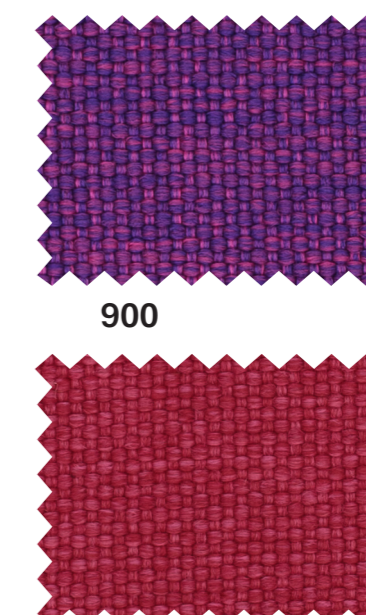
305



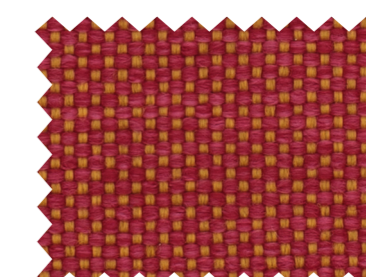
306



901



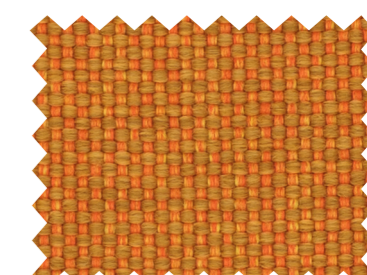
900



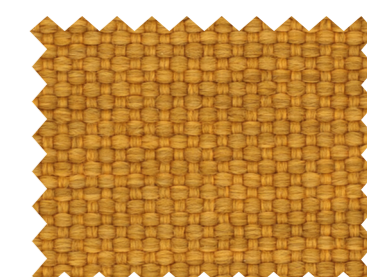
304



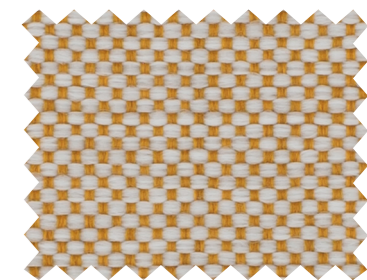
301



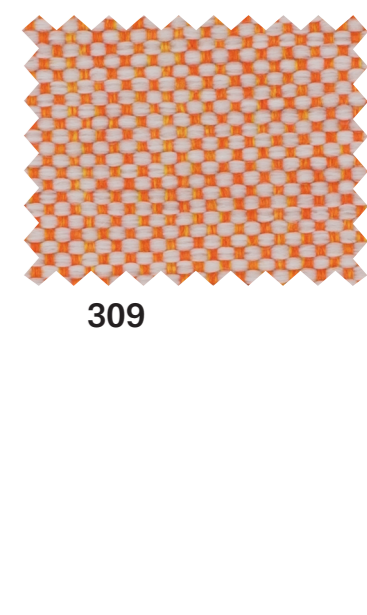
310



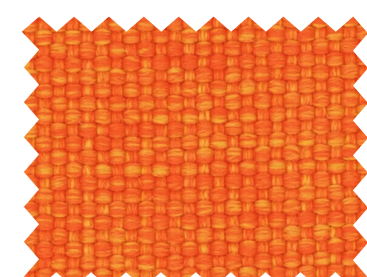
500



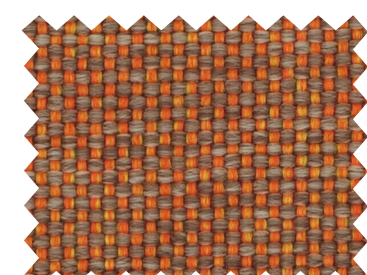
501



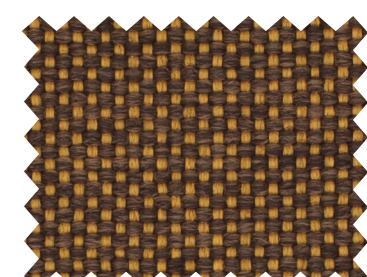
309



307



308



503