

# abitex

## caliente 04242



fireproof



imo-med



proposition 65



year guarantee

abitex - caliente - 04242

Dicevano sembrasse un gentiluomo spagnolo. Il motivo era dovuto ai modi aristocratici e alle espressioni in castigliano che usava per attirare l'attenzione. Una volta, mentre aspettava un'amica nell'atrio di un albergo, quando una donna si alzò dal divano prese il suo posto. "In realtà ritorno subito", disse lei. "Bene", fece lui, "le terrò il posto caliente finché non torna".

They said he seemed like a Spanish gentleman. The reason was due to the aristocratic ways and expressions in Castilian that he used to attract attention. Once, while waiting for a friend in the atrium of a hotel, a woman got up from the sofa and he took her seat. "Actually, I'm coming right back," she said. "Well," her answered, "I will keep the seat caliente until you return".



abitex.lab

# abitex

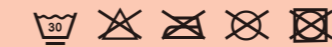
abitex srl

headquarter  
via del cristo 84  
33044 manzano  
ud - italy

legal address  
via enrico fermi 9/11  
35010 cadoneghe  
pd - italy

t +39 0432 746060  
f +39 0432 746035  
cf/p. iva/vat IT04453620280  
www.abitex.eu - info@abitex.eu

## caliente 04242



**IT**  
**codice doganale**  
54079300.  
**utilizzo**  
tende, imbottiti.  
**caratteristiche**  
52% polipropilene, 48% poliestere, altezza cm ± 140, peso ± 210 gr/m².  
**tintura**  
il prodotto è tinto in massa.  
**lunghezza pezze**  
circa 35 mt., disponibile anche al taglio con maggiorazione.  
**abrasione**  
40.000 cicli, ISO 12947-2.  
**solidità alla luce**  
4/5, ISO 105 B02.  
**solidità allo sfregamento**  
secco 4/5, umido 4, ISO 105 X12.  
**resistenza alla cucitura**  
ordito 2 mm, trama 2 mm, ISO 13936-2.  
**pilling**  
4/5, ISO 12945-2.  
**resistenza al fuoco**  
11M - UNI 9175; EN 1021 1/2; NFPA 260 Class 1; California TB 117-2013; IMO FTP Code 307 part 8; IMO FTP Code 307 part 7.  
**attenzione**  
sono ammesse leggere differenze di colore tra differenti partite. consigliamo di verificare le schede tecniche di tutti i prodotti su [www.abitex.eu](http://www.abitex.eu)

**EN**  
**customs code**  
54079300.  
**use**  
curtains, upholstered furniture.  
**features**  
52% polypropylene, 48% polyester, width cm ± 140, weight ± 210 g/m².  
**dyeing**  
solution dyed product.  
**roll length**  
approx. 35 m., can also be cut-to-length at an extra cost.  
**abrasion resistance**  
40,000 rubs, ISO 12947-2.  
**colour fastness to light**  
4/5, ISO 105 B02.  
**fastness to rubbing**  
dry 4/5, wet 4, ISO 105 X12.  
**seam slippage**  
warp 2 mm, weft 2 mm, ISO 13936-2.  
**pilling**  
4/5, ISO 12945-2.  
**fire resistance**  
11M - UNI 9175; EN 1021 1/2; NFPA 260 Class 1; California TB 117-2013; IMO FTP Code 307 part 8; IMO FTP Code 307 part 7.  
**attention**  
slight colour differences between different batches are allowed, please check the technical data sheets of all products on the abitex website [www.abitex.eu](http://www.abitex.eu)

**DE**  
**zolltarifnummer**  
54079300.  
**verwendung**  
vorhänge, polstermöbel.  
**merkmale**  
52% polypropylen, 48% polyester, breite cm ± 140, gewicht ± 210 gr/m².  
**färbung**  
spinngefärbt.  
**länge des tuchs**  
ca. 35 lfm., auch geschnitten gegen aufpreis erhältlich.  
**abriebbeständigkeit**  
40.000 zyklen, ISO 12947-2.  
**farbbeständigkeit gegenüber licht**  
4/5, ISO 105 B02.  
**reibechtheit**  
trocken 4/5, feucht 4, ISO 105 X12.  
**nahtschleibewiderstand**  
Kette 2 mm, Schuss 2 mm, ISO 13936-2.  
**pillverhalten**  
4/5, ISO 12945-2.  
**feuerbeständigkeit**  
11M - UNI 9175; EN 1021 1/2; NFPA 260 Class 1; California TB 117-2013; IMO FTP Code 307 part 8; IMO FTP Code 307 part 7.  
**achtung**  
leichte farbuterschiede zwischen den einzelnen partien sind. wir empfehlen, die technischen datenblätter für alle produkte unter [www.abitex.eu](http://www.abitex.eu) zu prüfen.

**FR**  
**code douanier**  
54079300.  
**utilisation**  
rideaux, meubles rembourrés.  
**caractéristiques**  
52% polypropylène, 48% polyester, hauteur cm ± 140, largeur ± 210 g/m².  
**teinture**  
le produit est teinté dans la masse.  
**longueur des pièces**  
environ 35 m. lin., disponible également à la coupe avec une majoration.  
**résistance à l'abrasion**  
40.000 rotations, ISO 12947-2.  
**solidité et résistance des couleurs à la lumière**  
4/5, ISO 105 B02.  
**solidité et résistance au frottement**  
sec 4/5, humide 4, ISO 105 X12.  
**résistance à la couture**  
chaîne 2 mm, trame 2 mm, ISO 13936-2.  
**houlochage**  
4/5, ISO 12945-2.  
**résistance au feu**  
11M - UNI 9175; EN 1021 1/2; NFPA 260 Class 1; California TB 117-2013; IMO FTP Code 307 part 8; IMO FTP Code 307 part 7.  
**attention**  
de légères différences de couleur entre différents lots sont admises, nous vous conseillons de vérifier les fiches techniques de tous les produits sur [www.abitex.eu](http://www.abitex.eu)

**ES**  
**código aduanero**  
54079300.  
**utilización**  
cortinas, muebles tapizados.  
**características**  
52% polipropileno, 48% poliéster, ancho ± 140 cm, peso ± 210 gr/m².  
**tinte**  
tintura en masa.  
**largo de las piezas**  
aprox. 35 m., también disponible al corte con recargo.  
**resistencia a la abrasión**  
40.000 ciclos martindale, ISO 12947-2.  
**solidez de los colores a la luz**  
4/5, ISO 105 B02.  
**solidez al frote**  
seco 4/5, húmedo 4, ISO 105 X12.  
**resistencia al deslizamiento de hilos**  
urdimbre 2 mm, trama 2 mm, ISO 13936-2.  
**formación de bolitas**  
4/5, ISO 12945-2.  
**resistencia al fuego**  
11M - UNI 9175; EN 1021 1/2; NFPA 260 Class 1; California TB 117-2013; IMO FTP Code 307 part 8; IMO FTP Code 307 part 7.  
**atención**  
son admisibles ligeras diferencias de color entre partidas diversas. se aconseja verificar las fichas técnicas de todos los productos en [www.abitex.eu](http://www.abitex.eu)

**AR**  
**كود الجمركي**  
54079300.  
**مادختسالي**  
تانانظنم، ري، ايفيس.  
**تالونيل**  
عافتترارل، رتسليوب 48%، نيكيوب كيلوب 52%، وزنم ± 210 جم/م².  
**غياص**  
لوحلمب عوبصم جتلمل.  
**عطقا لوط**  
بسح اصريا رفوتم، يلو ط رتم 35 براوي ام.  
**للتاتل قواقم**  
40.000 روتاسون، ISO 12947-2.  
**موضلا مات نولل تابث**  
4/5، ISO 105 B02.  
**لرفلا دفس تابث**  
11م - UNI 9175، EN 1021 1/2، NFPA 260 Class 1، California TB 117-2013، IMO FTP Code 307 part 8، IMO FTP Code 307 part 7.  
**زبلا دفس تابث**  
4/5، ISO 105 X12.  
**ببول بوظ**  
4/5، ISO 12945-2.  
**قيكيول قواقم**  
11م - UNI 9175، EN 1021 1/2، NFPA 260 Class 1، California TB 117-2013، IMO FTP Code 307 part 8، IMO FTP Code 307 part 7.  
**ماتبتنارل**  
نيب نوللاب قيفيظلال تافالجتال عوجوسم تاقاطنلا فجاجمب حصنن. فقلا جمل تاقولل عصوصم جف تاجتلمل قفائل قينوتل [www.abitex.eu](http://www.abitex.eu) تاجرتنارل.

**ZH**  
**海关编码**  
54079300.  
**用途**  
窗帘，填充物。  
**特性**  
52% 聚丙烯，48% 涤纶，高度 ± 140 cm，重量 ± 210 gr/m²。  
**染色**  
整染染色布。  
**布匹长度**  
约35米。也可提供付费切割。  
**耐磨性能**  
40,000 转，ISO 12947-2。  
**耐光色牢度**  
4/5, ISO 105 B02。  
**耐摩擦色牢度**  
干摩擦 4/5, 湿摩擦 4, ISO 105 X12。  
**缝线滑移**  
经向 2 mm, 纬向 2 mm, ISO 13936-2。  
**起球**  
4/5, ISO 12945-2。  
**防火性能**  
11M - UNI 9175; EN 1021 1/2; NFPA 260 Class 1; California TB 117-2013; IMO FTP Code 307 part 8; IMO FTP Code 307 part 7。  
**注意**  
不同批次之间允许存在轻微色差。请登录 [www.abitex.eu](http://www.abitex.eu) 网站参考所有产品的相关技术数据表。

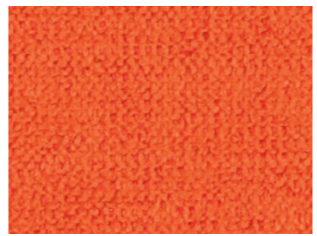
**RU**  
**таможенный кодекс**  
54079300.  
**использование**  
шторы, мягкая мебель.  
**характеристики**  
52% полипропилен, 48% полиэстер, высота в см ± 140, вес ± 210 г/м².  
**краситель**  
продукт окрашивают насылью.  
**длина детали**  
о 35 погонных метрах, также доступны в разрезе при условии дополнительной оплаты.  
**устойчивость к изнашиванию**  
40,000 циклов, ISO 12947-2.  
**светостойкость**  
4/5, ISO 105 B02.  
**устойчивость к истиранию**  
сухой 4/5, влажный 4, ISO 105 X12.  
**прочность швов**  
основа 2 мм, уток 2 мм, ISO 13936-2.  
**пиллинг**  
4/5, ISO 12945-2.  
**огнестойкость**  
11M - UNI 9175; EN 1021 1/2; NFPA 260 Class 1; California TB 117-2013; IMO FTP Code 307 part 8; IMO FTP Code 307 part 7.  
**внимание**  
допускаются незначительные различия в цвете между различными частями. мы рекомендуем проверить технические паспорта всех продуктов [www.abitex.eu](http://www.abitex.eu)



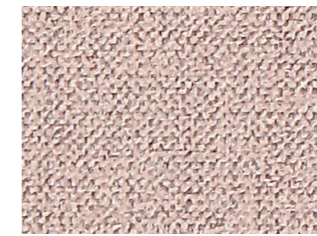
100



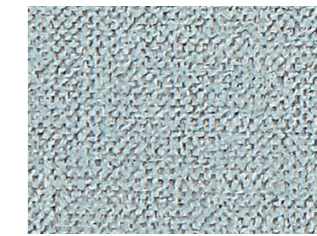
400



307

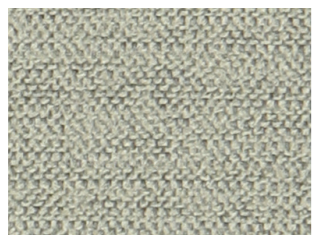


409

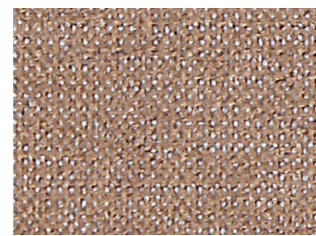


803

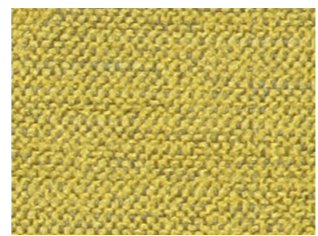
abitex  
caliente - 04242



602



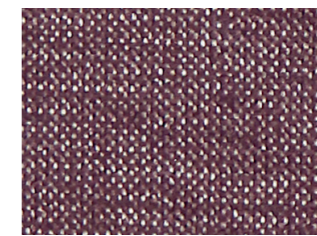
401



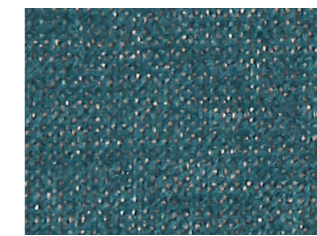
500



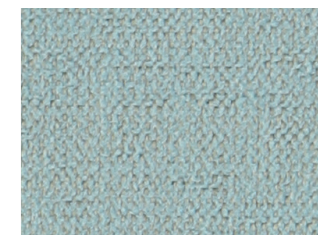
900



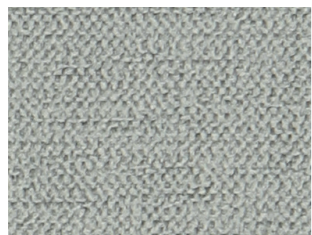
004



805



703



605



402



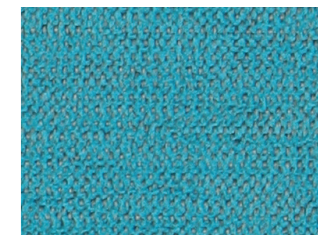
804



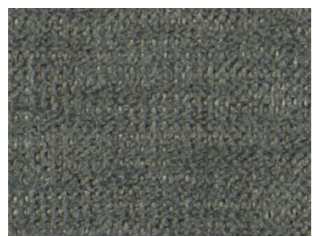
309



806



701



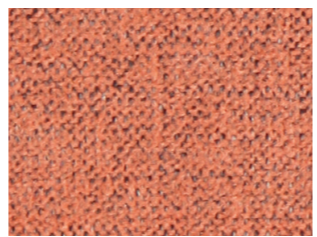
603



403



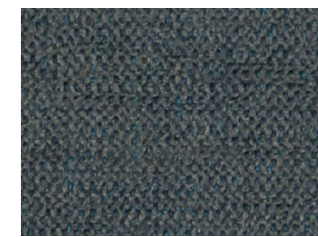
802



903



002



700



abitex



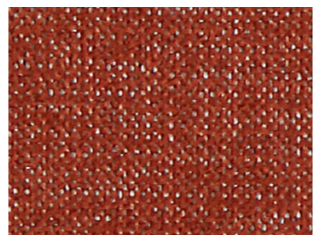
600



404



801



304



901



003



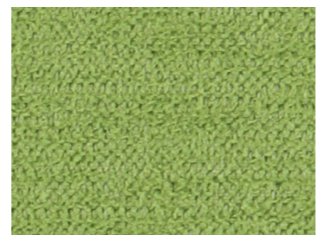
702



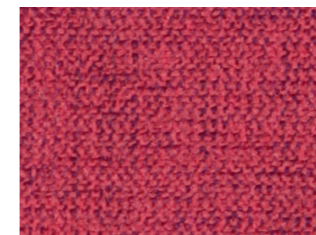
200



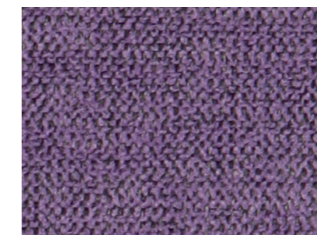
405



800



911



001



705

