



abitex

konjac grisaglia 08812



outdoor



easy clean



eco-friendly



proposition 65



year guarantee

abitex — konjac grisaglia — 08812

L'aria era tiepida
e lei stava distesa in salotto,
la porta che dava sul giardino
era aperta.

Ad occhi chiusi immaginò di
essere sempre sul divano,
sempre in casa,
ma sulla soglia.

Non le bastò
e allora pensò di stare fuori.
Le sembrò di sentir scomparire
le pareti e sorrise.

Immaginò di essere
ai bordi di una piscina.
Fece scivolare la mano
dal divano al pavimento.
La ritrasse bagnata.

The air was lukewarm and
she was lying in the living
room, the door on the garden
was open.

With her eyes closed,
she imagined she was always
on the couch, always at
home, but on the doorstep.
That was not enough
for her, so she thought
she was outside.
She felt like she could feel
the walls disappearing
and smiled.

She imagined she was at the
edge of a pool.
She let her hand slide from
the sofa to the floor.
She pulled it back wet.



abitex.lab

abitex

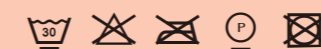
abitex srl

headquarter
via del cristo 84
33044 manzano
ud — italy

legal address
via enrico fermi 9/11
35010 cadoneghe
pd — italy

t +39 0432 746060
f +39 0432 746035
cf/p. iva/vat IT04453620280
www.abitex.eu - info@abitex.eu

konjac grisaglia 08812



IT
codice doganale
54072011.
utilizzo
tende, imbottiti, outdoor.
caratteristiche
100% polipropilene, altezza cm ± 140,
peso ± 580 gr/m².
tintura
il prodotto è tinto in massa.
lunghezza pezzi
circa 35 mt., disponibile anche al taglio con
maggiorazione.
abrasione
> 70.000 cicli, ISO 12947-2.
solidità alla luce
7-7/8, ISO 105 B02.
solidità allo sfregamento
secco 5, umido 4/5, ISO 105 X12.
resistenza alla cucitura
ordito 4 mm, trama 3 mm, ISO 13936-2.
pilling
5, ISO 12945-2.
attenzione
sono ammesse leggere differenze di colore tra
differenti partite, non ci assumiamo nessuna
responsabilità per il trasferimento di colore/pigmenti
causato da abbigliamento e accessori. consigliamo
di verificare le schede tecniche di tutti i prodotti su
www.abitex.eu

EN
customs code
54072011.
use
curtains, upholstered furniture, outdoor.
features
100% polypropylene, width cm ± 140,
weight ± 580 gr/m².
dyeing
solution dyed product.
roll length
approx. 35 m., can also be cut-to-length at an extra
cost.
abrasion resistance
> 70.000 rubs, ISO 12947-2.
colour fastness to light
7-7/8, ISO 105 B02.
fastness to rubbing
dry 5, wet 4/5, ISO 105 X12.
seam slippage
warp 4 mm, welt 3 mm, ISO 13936-2.
pilling
5, ISO 12945-2.
attention
slight colour differences between different batches
are allowed, we assume no responsibility for the
transfer of colour/pigment caused by clothing and
accessories, please check the technical data sheets
of all products on the abitex website www.abitex.eu

www.abitex.eu

DE
zolltarifnummer
54072011.
verwendung
vorhänge, polstermöbel, outdoor.
merkmale
100% polypropylen, breite cm ± 140,
gewicht ± 580 gr/m².
färbung
spinngefärbt.
länge des tuchs
ca. 35 lm., auch geschnitten gegen aufpreis
erhältlich.
abriebbeständigkeit
> 70.000 zyklen, ISO 12947-2.
farbbeständigkeit gegenüber licht
7-7/8, ISO 105 B02.
reibebehalt
trocken 5, feucht 4/5 mm, ISO 105 X12.
nahtschibewiderstand
kette 4 mm, schuss 3 mm, ISO 13936-2.
pillverhalten
5, ISO 12945-2.
achtung
leichte farbumterschiede zwischen den einzelnen
partien sind zulässig, wir übernehmen keine
verantwortung für verfärbungen/farbflecken, die
durch kleidung und accessoires verursacht werden.
wir empfehlen, die technischen datenblätter für alle
produkte unter www.abitex.eu zu prüfen.

FR
code douanier
54072011.
utilisation
rideaux, meubles rembourrés, extérieur.
caractéristiques
100% polypropylène, hauteur cm ± 140,
largeur ± 580 gr/m².
teinture
le produit est teinté dans la masse.
longueur des pièces
environ 35 m., disponible également à la coupe
avec une majoration.
résistance à l'abrasion
> 70.000 rotations, ISO 12947-2.
solidité et résistance des couleurs à la lumière
7-7/8, ISO 105 B02.
solidité et résistance au frottement
sec 5, humide 4/5, ISO 105 X12.
résistance à la couture
châtré 4 mm, trame 3 mm, ISO 13936-2.
boulochage
5, ISO 12945-2.
attention
de légères différences de couleur entre différents
lots sont admises, nous ne nous assumons aucune
responsabilité par rapport au transfert de couleurs/
pigments éventuellement provoqué par les vêtements
et les accessoires, nous vous conseillons de vérifier
les fiches techniques de tous les produits sur
www.abitex.eu

www.abitex.eu

ES
código aduanero
54072011.
utilización
cortinas, muebles tapizados, al aire libre.
características
100% polipropileno, ancho ± 140 cm,
peso ± 580 gr/m².
tinte
tintura en masa.
largo de las piezas
aprox. 35 m., también disponible al corte con
recargo.
resistencia a la abrasión
> 70.000 ciclos martindale, ISO 12947-2.
solidez de los colores a la luz
7-7/8, ISO 105 B02.
solidez al frote
seco 5, húmedo 4/5, ISO 105 X12.
resistencia al deslizamiento de hilos
umbré 4 mm, trama 3 mm, ISO 13936-2.
formación de bolitas
5, ISO 12945-2.
atención
son admitidas ligeras diferencias de color
entre partidas diversas, no asumimos ninguna
responsabilidad por transferencia de colores/
pigmentos causada por ropa o accesorios, se
aconseja verificar las fichas técnicas de todos los
productos en www.abitex.eu

AR
كود الجمركي
54072011.
معلومات المنتج
ق. لطل باوول ایف، تانطیم، بیاتیس
تأسیسات
میس، 140 ± عفتدلال، نیل-پروب یلوب 100%،
م/ع 580 ± نرول
تقابص
لؤلوحصب غوبصیم جتدمل
عقول لوط
بسج اضی رفوسیم، یلوب رتم 35 نرایی ام
جلیع اربوب نیلوس ساییول
مواصفات ابروایم
> 70,000 یتاروب، ISO 12947-2.
موضلا مات نروللا تابث
7-7/8, ISO 105 B02.
لریرال دص تابثیل
4/5, ISO 105 X12.
نریرلا دص تابث
5, ISO 13936-2.
یسول روط
5, ISO 12945-2.
مابثیل
نیک نروللاب قفیفحطل تابفال تبجالی جوموسیم
یسول ووسیم جالی جتدمن ال، قفل تبجوال تابثیل
جتدمن ال قفیفصیل رصیعل / نرول ال روت طوب
تجرواب جتدمن، تابواسیل کالی واسیاعمل ال
یف تابثیل قفیفصل تابثیل تابثیل
www.abitex.eu تبثیل نروللاب عرصوم

www.abitex.eu

ZH
海关编号
54072011.
用途
窗帘，填充物，户外。
特性
100% 聚丙烯，高度 ± 140 cm，重量 ± 580 gr/m².
染色
原液染色布。
布匹长度
约35米，也可提供付费切割
耐磨性能
> 70,000 转，ISO 12947-2.
耐光色牢度
7-7/8, ISO 105 B02.
耐摩擦色牢度
干摩擦 5，湿摩擦 4/5, ISO 105 X12.
缝线滑移
经向 4 mm，纬向 3 mm, ISO 13936-2.
起球
5, ISO 12945-2.
注意
不同批次之间允许存在轻微色差，我们对由于服装或配饰造成的颜色/颜料的染色不承担任何责任。请登录 www.abitex.eu 网站参考所有产品的
相关技术数据表

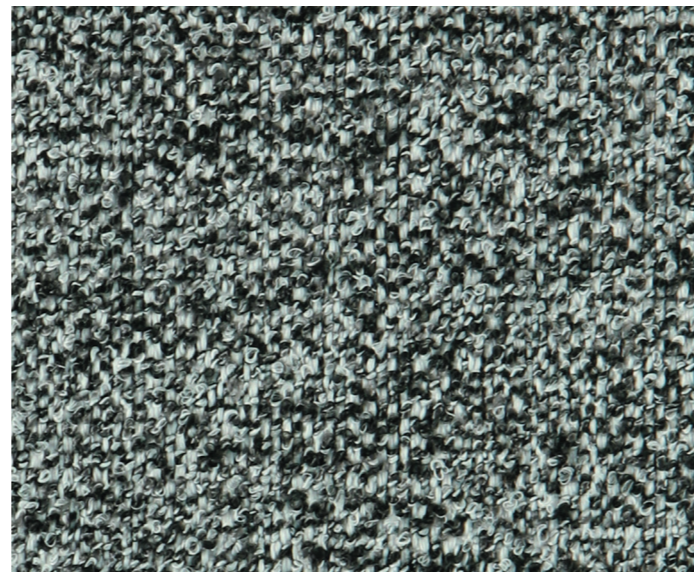
RU
таможенный кодекс
54072011.
использование
шторы, мягкая мебель, внешний.
характеристики
100% полипропилен, высота в см ± 140,
вес ± 580 г/м².
краситель
продукт окрашивают насылью.
длина детали
о 35 погонных метрах, также доступны в разрезе
при условии дополнительной оплаты.
устойчивость к изнашиванию
> 70.000 цикл, ISO 12947-2.
светостойкость
7-7/8, ISO 105 B02.
устойчивость к истиранию
сухой 5, влажный 4/5, ISO 105 X12.
прочность швов
основа 4 мм, уток 3 мм, ISO 13936-2.
пиллинг
5, ISO 12945-2.
внимание
допускаются незначительные различия в цвете
между различными частями, мы не несем
ответственности за передачу цвета / пигмента
при нанесении на одежду и аксессуары, мы
рекомендуем проверить технические паспорта
всех продуктов www.abitex.eu



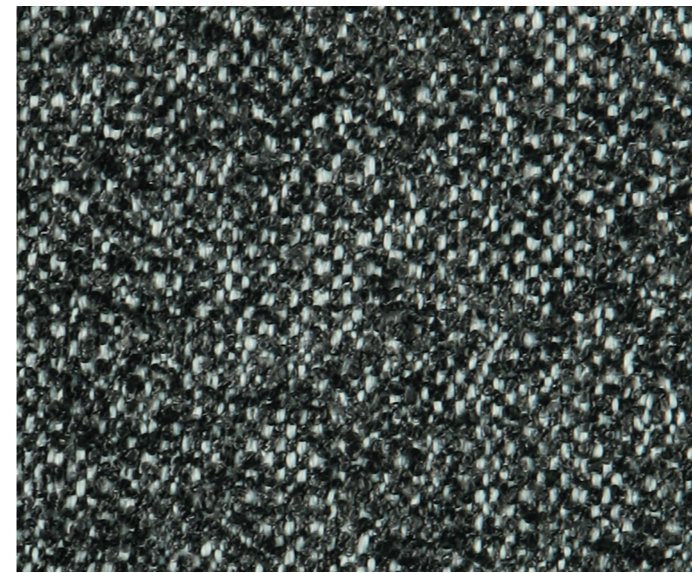
100



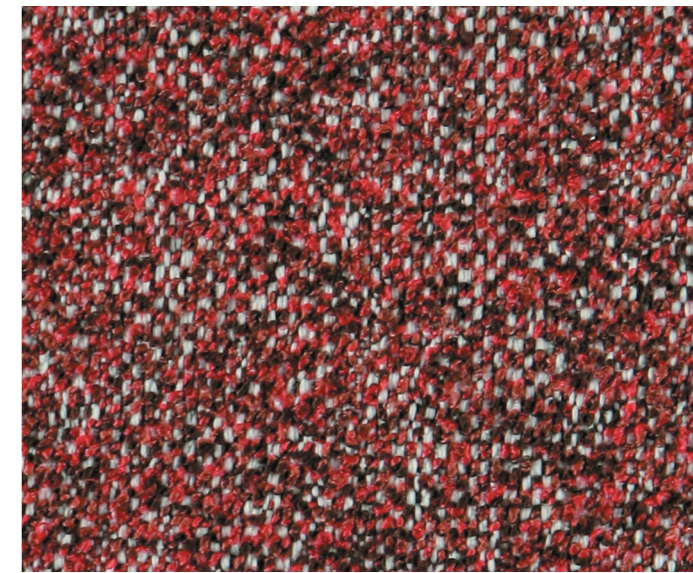
111



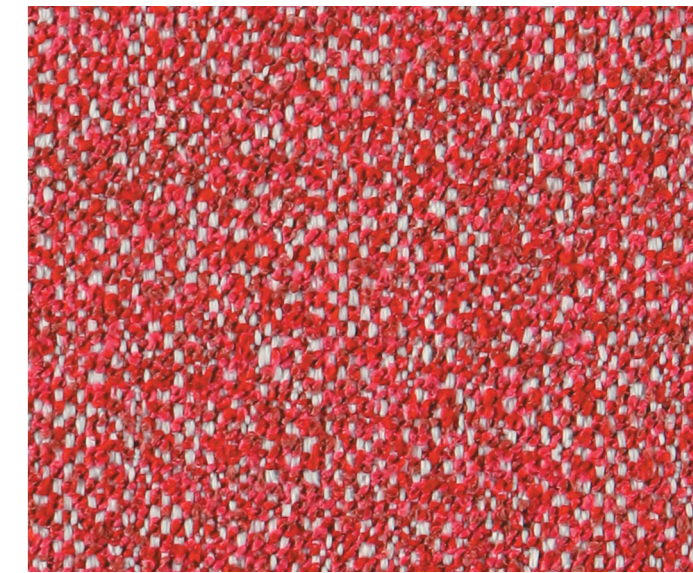
600



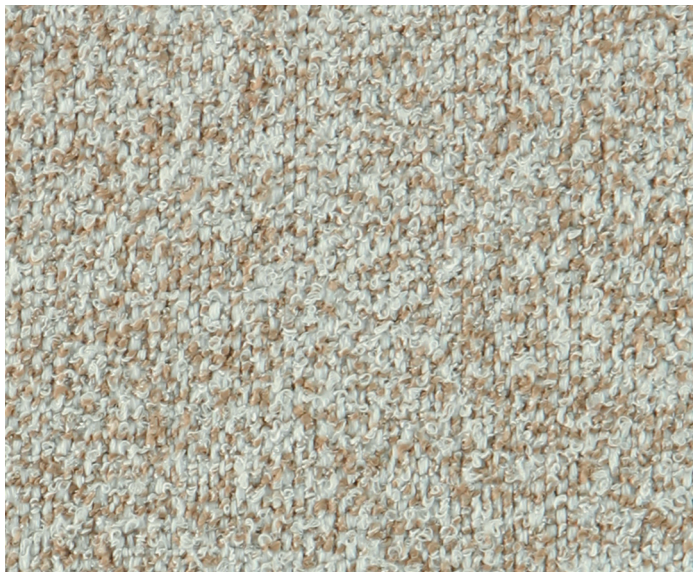
200



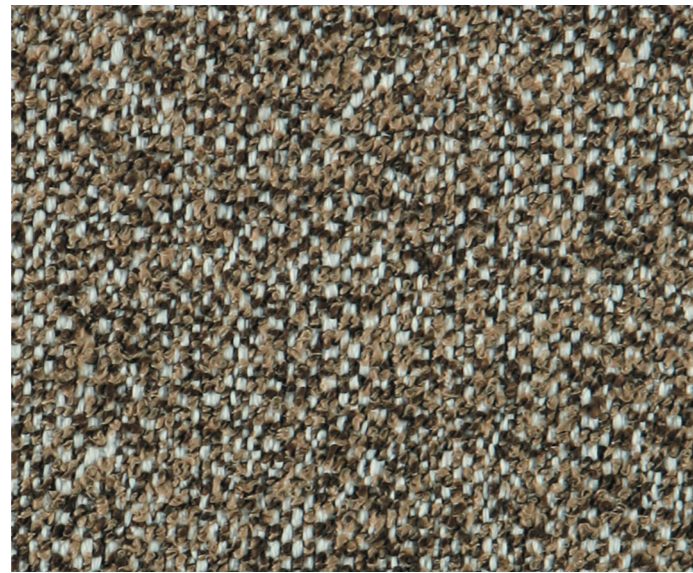
300



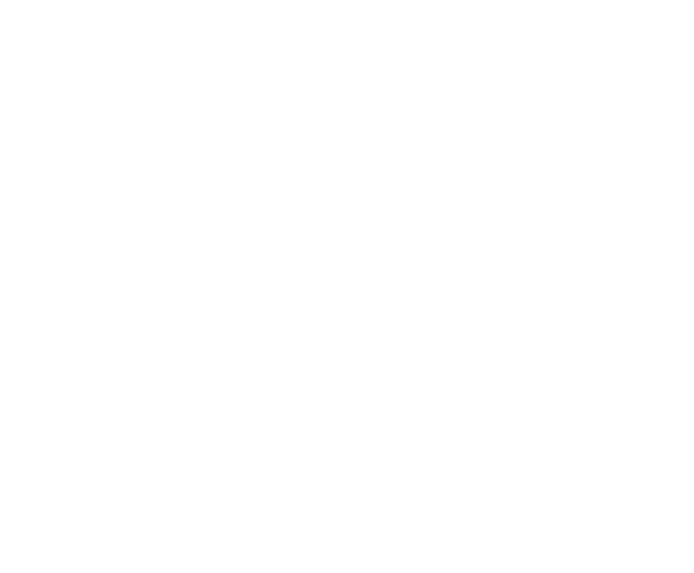
305



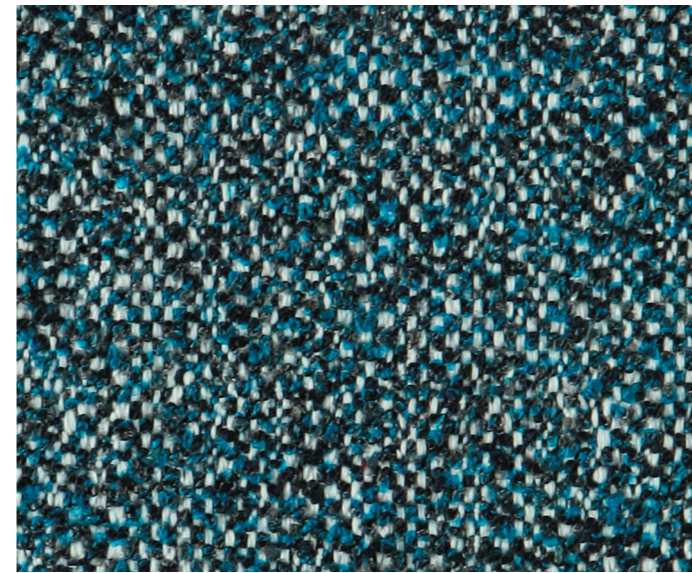
101



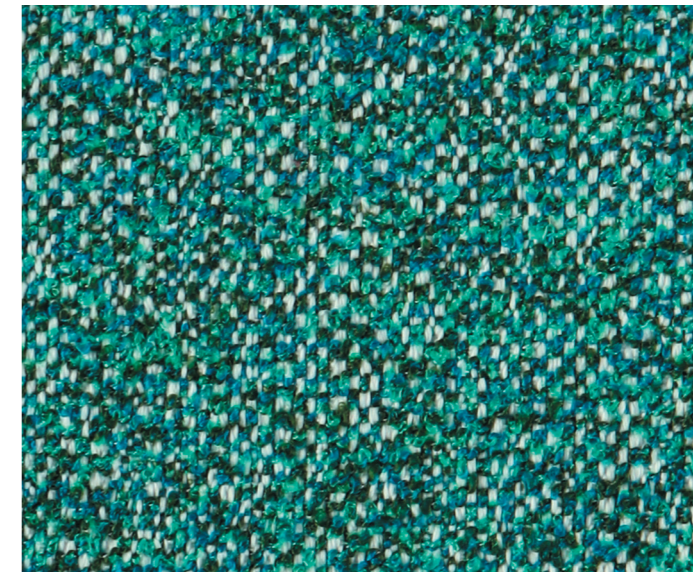
403



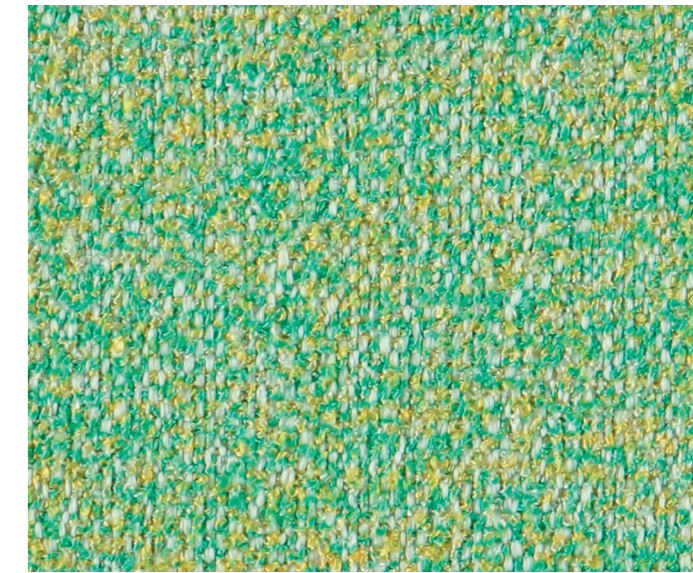
600



707



807



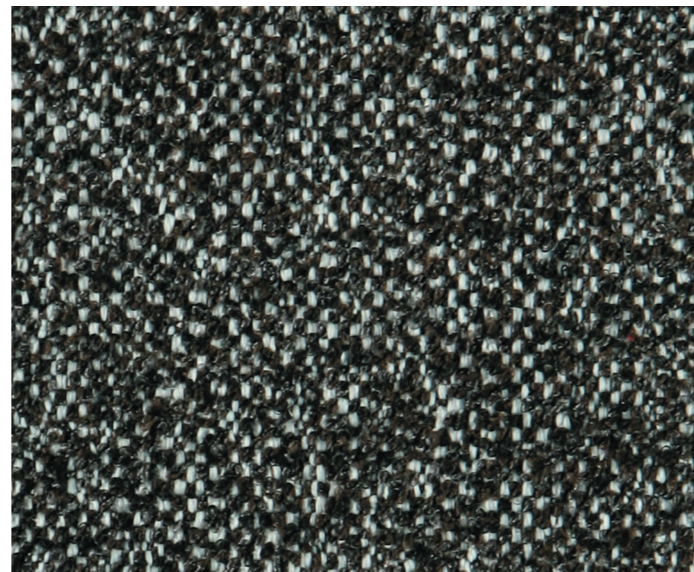
508



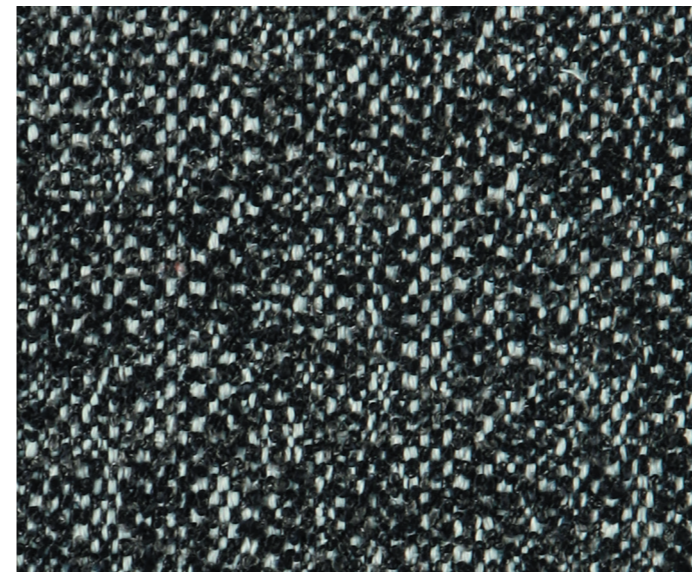
102



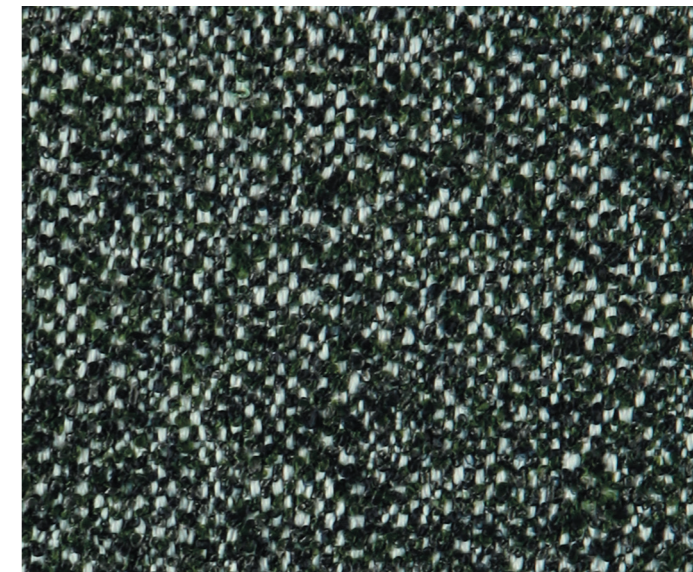
500



405



700



800



804