



abitex



fireproof



imo-med

parotega tex 02356

All'aeroporto

Vecchie borse in pelle,
nuove sale d'attesa appena
rinfrescate, sedie e panche
rivestite per viaggiatori
esigenti, tessuti high tech,
anime che scorrono tra cigolii
di scale mobili.

Un'ala spunta all'orizzonte.
Una valigia si dimentica
di tornare a casa.

Nasce un nuovo inizio
per lo scrittore in erba,
un passaggio a un amico
che viaggia solo è d'obbligo.
Qualcuno è in attesa.

Di speciali addii.

At the airport

Old leather handbags,
freshly redone waiting
rooms, chairs and benches
upholstered for demanding
travellers, high-tech fabrics,
souls flowing, squeaking
through escalators.

A wing appears on the
horizon. A suitcase forgets to
go home. A new beginning is
born for the budding writer,
a lift to a friend who is
travelling alone is obligatory.
Someone is waiting.
Special farewells.

abitex

abitex srl

headquarter
via del cristo 84
33044 manzano
ud - italy

legal address
via enrico fermi 9/11
35010 cadoneghe
pd - italy

t +39 0432 746060
f +39 0432 746035
p. iva/vat IT04453620280
www.abitex.eu - info@abitex.eu

parotega tex 02356



IT

codice doganale
39211200.

utilizzo
mobili tapizzati.

caratteristiche
84% pvc - 16% cotone, altezza cm ± 137,
peso ± 750 gr/m², spessore ± 1,30 mm.

finitura/aspetto
il prodotto è stampato e goffrato.

lunghezza pezzi
circa 30 mt.

abrasione
> 40.000 cicli, ISO 5470-2.

solidità alla luce
5, ISO 105 B02.

solidità allo sfregamento
secco 4/5, umido 4/5, ISO 105 X12.

resistenza alla rottura
ordito > 24 N/5 cm, trama > 15 N/5 cm, ISO 1421.

sostenibilità
REACH.

resistenza al fuoco
1M - UNI 9175; EN 1021 1/2; BS 5852 part 1;
BS 5852 crib 5; DIN 4102 B1; NF P 92 507 M1;
California TB 117-2013; IMO FTP Code 307 part 8.

attenzione
sono ammesse leggere differenze di colore tra
differenti partite, non ci assumiamo nessuna
responsabilità per il trasferimento di colore/pigmenti
causato da abbigliamento e accessori.

EN

customs code
39211200.

use
upholstered furniture.

features
84% pvc - 16% cotton, width cm ± 137,
weight ± 750 g/m², thickness ± 1,30 mm.

finish/aspect
printed and embossed product.

roll length
approx. 30 m.

abrasion resistance
> 40.000 rubs, ISO 5470-2.

colour fastness to light
5, ISO 105 B02.

fastness to rubbing
dry 4/5, wet 4/5, ISO 105 X12.

tensile strength
warp > 24 N/5 cm, weft > 15 N/5 cm, ISO 1421.

sustainability
REACH.

fire resistance
1M - UNI 9175; EN 1021 1/2; BS 5852 part 1;
BS 5852 crib 5; DIN 4102 B1; NF P 92 507 M1;
California TB 117-2013; IMO FTP Code 307 part 8.

attention
slight colour differences between different batches
are allowed, we assume no responsibility for the
transfer of colour/pigment caused by clothing and
accessories.

DE

zolltarifnummer
39211200.

verwendung
polstermöbel.

merkmale
84% pvc - 16% baumwolle, breite cm ± 137,
gewicht ± 750 gr/m², stärke ± 1,30 mm.

finish/aussehen
das produkt ist bedruckt und gaudiert.

länge der stücke
ca. 30 lm.

abriebbeständigkeit
> 40.000 zyklen, ISO 5470-2.

farbbeständigkeit gegenüber licht
5, ISO 105 B02.

reibezeit
trocken 4/5, feucht 4/5, ISO 105 X12.

zugfestigkeit
kette > 24 N/5 cm, schuss > 15 N/5 cm, ISO 1421.

nachhaltigkeit
REACH.

feuerbeständigkeit
1M - UNI 9175; EN 1021 1/2; BS 5852 part 1;
BS 5852 crib 5; DIN 4102 B1; NF P 92 507 M1;
California TB 117-2013; IMO FTP Code 307 part 8.

achtung
leichte farbunterschiede zwischen den einzelnen
partien sind zulässig, wir übernehmen keine
verantwortung für verfärbungen/farblecken, die durch
kleidung und accessoires verursacht werden.

FR

code douanier
39211200.

utilisation
meubles rembourrés.

caractéristiques
84% pvc - 16% coton, hauteur cm ± 137,
largeur ± 750 g/m², épaisseur ± 1,30 mm.

finish/aspect
le produit est imprimé et gaufré.

longueur des pièces
environ 30 m. lm.

résistance à l'abrasion
> 40.000 rotations, ISO 5470-2.

solidité et résistance des couleurs à la lumière
5, ISO 105 B02.

solidité et résistance au frottement
sec 4/5, humide 4/5, ISO 105 X12.

résistance à la rupture
châssis > 24 N/5 cm, trame > 15 N/5 cm, ISO 1421.

durabilité
REACH.

résistance au feu
1M - UNI 9175; EN 1021 1/2; BS 5852 part 1;
BS 5852 crib 5; DIN 4102 B1; NF P 92 507 M1;
California TB 117-2013; IMO FTP Code 307 part 8.

attention
de légères différences de couleur entre différents
lots sont admises, nous ne nous assumons aucune
responsabilité par rapport au transfert de couleurs/
pigments éventuellement provoqué par les vêtements
et les accessoires.

ES

código aduanero
39211200.

utilización
muebles tapizados.

características
84% pvc - 16% algodón, ancho ± 137 cm,
peso ± 750 gr/m², grosor ± 1,30 mm.

acabado/aspecto
producto estampado y gofrado.

largo de las piezas
aprox. 30 m.

resistencia a la abrasión
> 40.000 ciclos martindale, ISO 5470-2.

solidez de los colores a la luz
5, ISO 105 B02.

solidez al frote
seco 4/5, húmedo 4/5, ISO 105 X12.

resistencia a la rotura
urdimbre > 24 N/5 cm, trama > 15 N/5 cm, ISO 1421.

resistencia a la rotura
REACH.

resistencia al fuego
1M - UNI 9175; EN 1021 1/2; BS 5852 part 1;
BS 5852 crib 5; DIN 4102 B1; NF P 92 507 M1;
California TB 117-2013; IMO FTP Code 307 part 8.

atención
son admisibles ligeras diferencias de color
entre partidas diversas, no asumimos ninguna
responsabilidad por transferencia de colores/
pigmentos causada por ropa o accesorios.

ZH

海关编号
39211200.

用途
填充物。

特性
84% pvc - 16% 棉, 高度 ± 137 cm,
重量 ± 750 gr/m², 厚度 约 ± 1,30 mm.

工艺/外观
印花与轧花。

布匹长度
约30米。

耐磨性能
> 40,000 转, ISO 5470-2.

耐光色牢度
5, ISO 105 B02.

耐摩擦色牢度
干摩擦 4/5, 湿摩擦 4/5, ISO 105 X12.

耐撕裂力
经向 > 24 N/5 cm, 纬向 > 15 N/5 cm, ISO 1421.

可持续性
REACH.

防火性能
1M - UNI 9175; EN 1021 1/2; BS 5852 part 1;
BS 5852 crib 5; DIN 4102 B1; NF P 92 507 M1;
California TB 117-2013; IMO FTP Code 307 part 8.

注意
不同批次之间允许存在轻微色差, 我们对由于
服装或配饰造成的颜色/颜料的染色不承担任何
责任。

RU

таможенный кодекс
39211200.

использование
мягкая мебель.

характеристики
84% pvc - 16% хлопок, высота в см ± 137,
вес ± 750 г/м², толщина о ± 1,30 погонных метрах.

отделка / внешний вид
печатный и рельефный.

длина детали
о 30 погонных метрах.

устойчивость к изнашиванию
> 40.000 циклов, ISO 5470-2.

светостойкость
5, ISO 105 B02.

устойчивость к истиранию
сухой 4/5, влажный 4/5, ISO 105 X12.

прочность на разрыв.
основа > 24 N/5 см, уток > 15 N/5 см, ISO 1421.

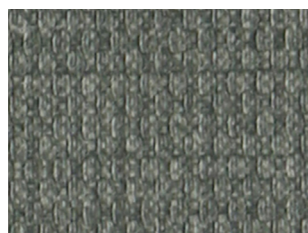
устойчивость
REACH.

огнестойкость
1M - UNI 9175; EN 1021 1/2; BS 5852 part 1;
BS 5852 crib 5; DIN 4102 B1; NF P 92 507 M1;
California TB 117-2013; IMO FTP Code 307 part 8.

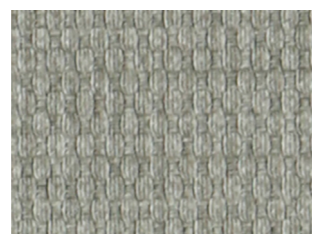
внимание
допускаются незначительные различия в цвете
между различными частями, мы не несем
ответственности за передачу цвета / пигмента
при нанесении на одежду и аксессуары.



200



600



601



105



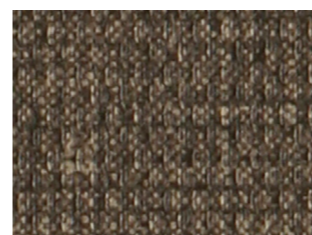
103



400



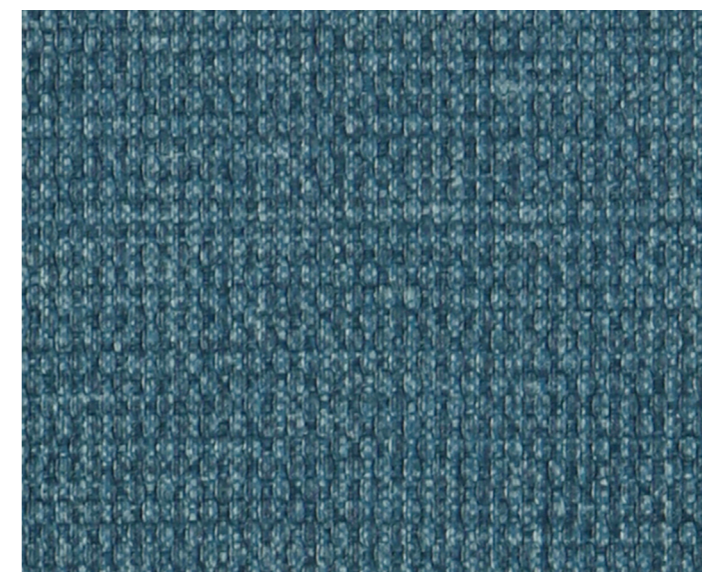
603



404



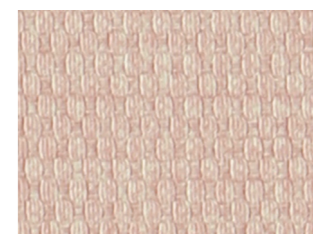
701



700



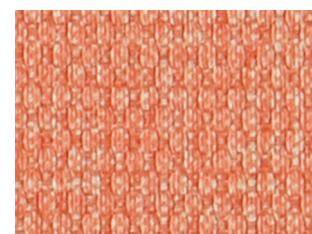
500



001



801



300



800