

abitex

abitex srl

headquarter
via del cristo 84
33044 manzano
ud - italy

legal address
via enrico fermi 9/11
35010 cadoneghe
pd - italy

t +39 0432 746060
f +39 0432 746035
c/f/p - iva/vat IT04453620280
www.abitex.eu - info@abitex.eu

IT

codice doganale

54075300.

utilizzo

imbottiti, outdoor,
assorbimento acustico.

caratteristiche

98% poliestere riciclato
(post-consumo),
2% elastomero LYCRA®,
altezza cm ± 140, peso ± 1050 gr/m².

tintura

il prodotto é tinta in filo.

lunghezza pezze

circa 20 mtl.

abrasione

> 350.000 cicli, ISO 12947-2.

solidità alla luce

6/7-7, ISO 105 B02.

solidità allo sfregamento

secco 4/5, umido 4/5, ISO 105 X12.

resistenza alla cucitura

ordito 2 mm, trama 2 mm,
ISO 13936-2.

pilling

4/5, ISO 12945-2.

sostenibilità

GRS®, OEKO-TEX®.

resistenza al fuoco

11M - UNI 9175;
B-s1,d0 - EN 13501;
EN 1021 1/2;
BS 7176 + A1 medium hazard;
BS 5852 crib 5;
NF-P 92 507 - M3;
NF D 60-013 (AM18);
NFFA 260;
California TB 117-2013;
IMO MED 3.20 - Ftp 307 part. 8.

attenzione

sono ammesse leggere differenze di
colore tra differenti partite, consigliamo
di verificare le schede tecniche di tutti i
prodotti su www.abitex.eu

EN

customs code

54075300.

use

upholstered furniture, outdoor,
sound absorption.

features

98% recycled polyester
(post-consumer),
2% LYCRA® elastomer,
width cm ± 140, weight ± 1050 g/m².

dyeing

yarn dyed product.

roll length

approx. 20 lm.

abrasion resistance

> 350.000 rubs, ISO 12947-2.

colour fastness to light

6/7-7, ISO 105 B02.

fastness to rubbing

dry 4/5, wet 4/5, ISO 105 X12.

seam slippage

warp 2 mm, weft 2 mm,
ISO 13936-2.

pilling

4/5, ISO 12945-2.

sustainability

GRS®, OEKO-TEX®.

fire resistance

11M - UNI 9175;
B-s1,d0 - EN 13501;
EN 1021 1/2;
BS 7176 + A1 medium hazard;
BS 5852 crib 5;
NF-P 92 507 - M3;
NF D 60-013 (AM18);
NFFA 260;
California TB 117-2013;
IMO MED 3.20 - Ftp 307 part. 8.

attention

slight colour differences between
different batches are allowed, please
check the technical data sheets of all
products on the abitex website
www.abitex.eu



STANDARD
100



©TextileExchange

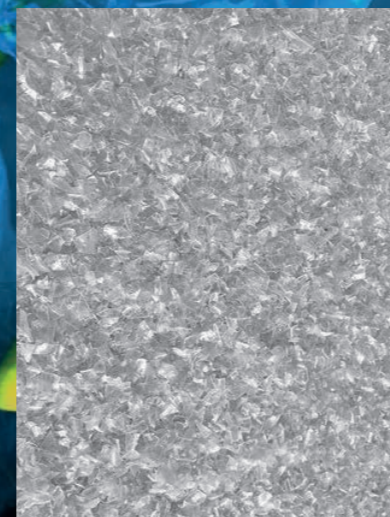
abitex

interior
outfit

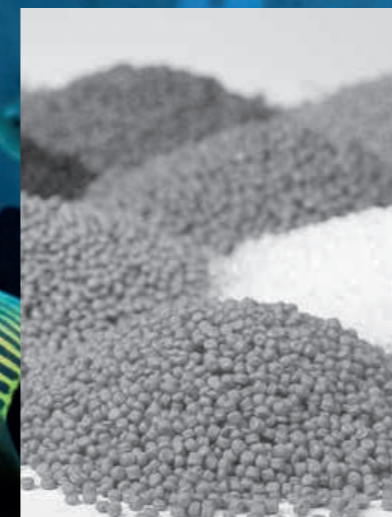
COLLECT
THE BOTTLES



MAKE
THE CHIPS



TRANSFORM
IN FLAKES



MAKE
THE YARN



PRODUCE
THE FABRIC



Abitex is a cutting-edge workshop in the textile industry, specializing in producing fire retardant and high-performing fabrics for contract use, particularly in hospitality and cruise markets.

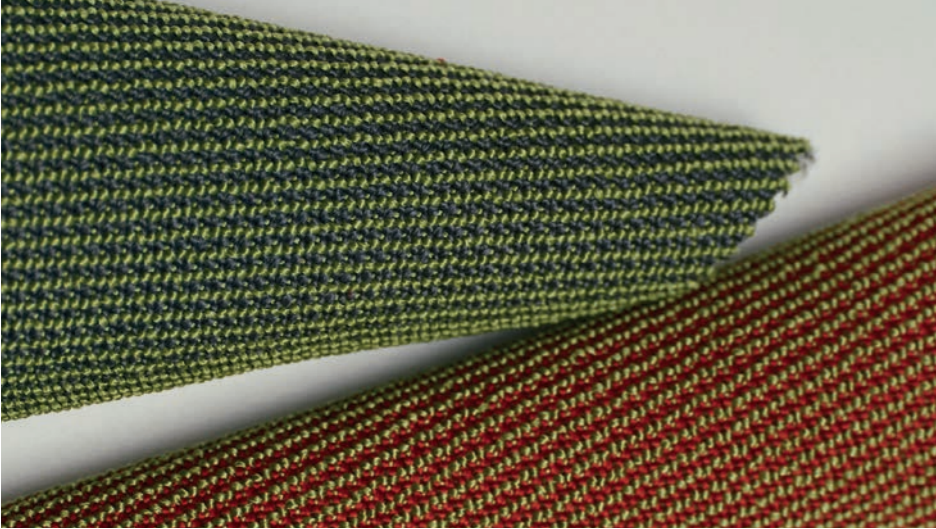
Not just an artistic surface, fabric holds intrinsic technical value and functionality, making it a multifaceted element in Abitex's creations. Positioned as an "interior outfit" concept, Abitex stands as a diverse laboratory in the textile world, offering high-tech designs that serve as hubs for experimentation, drawing from the rich Italian expertise gained through hands-on experience. Color plays a crucial role in Abitex's identity, viewed as an essential element of the brand's genetic code. The company perceives and studies color as a chemical vibration, resulting in a vibrant explosion of shades and textures for end-users.

Abitex's interior design focus revolves around aesthetics and comprehensive experimentation, delving into science and innovation through various thematic topics that embrace conscious, hi-tech, and environmentally-friendly textiles. Meeting the demands of the contract market, Abitex fabrics provide a complete solution for those seeking style, safety, and performance.

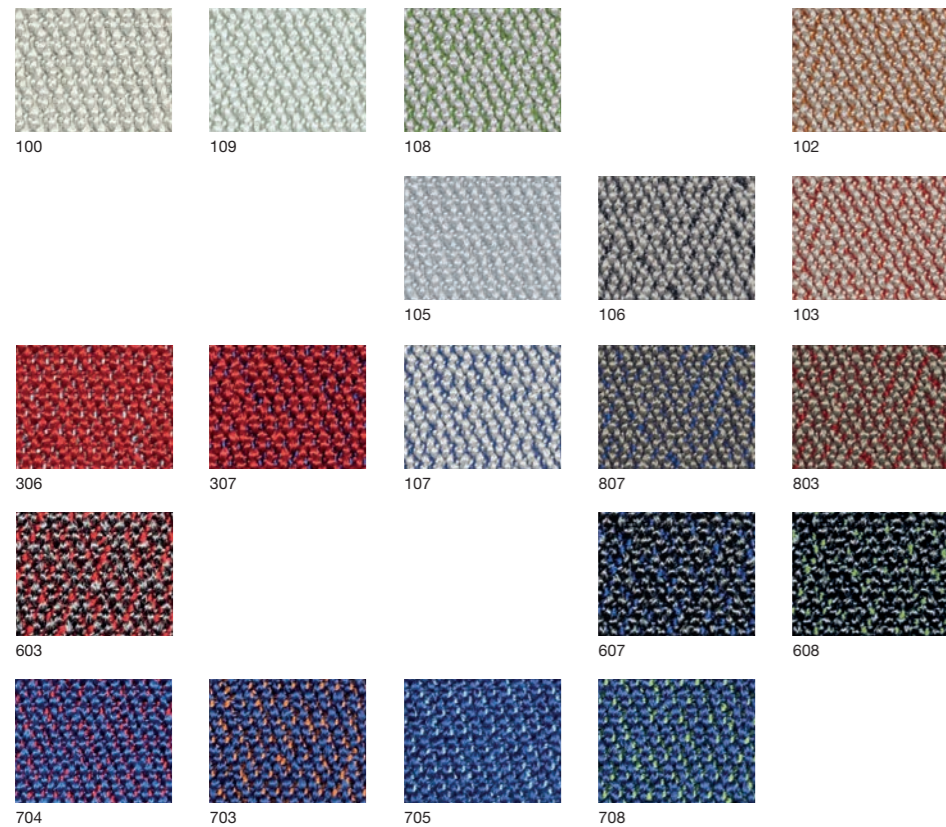


b-chew
THE BI-ELASTIC ONE

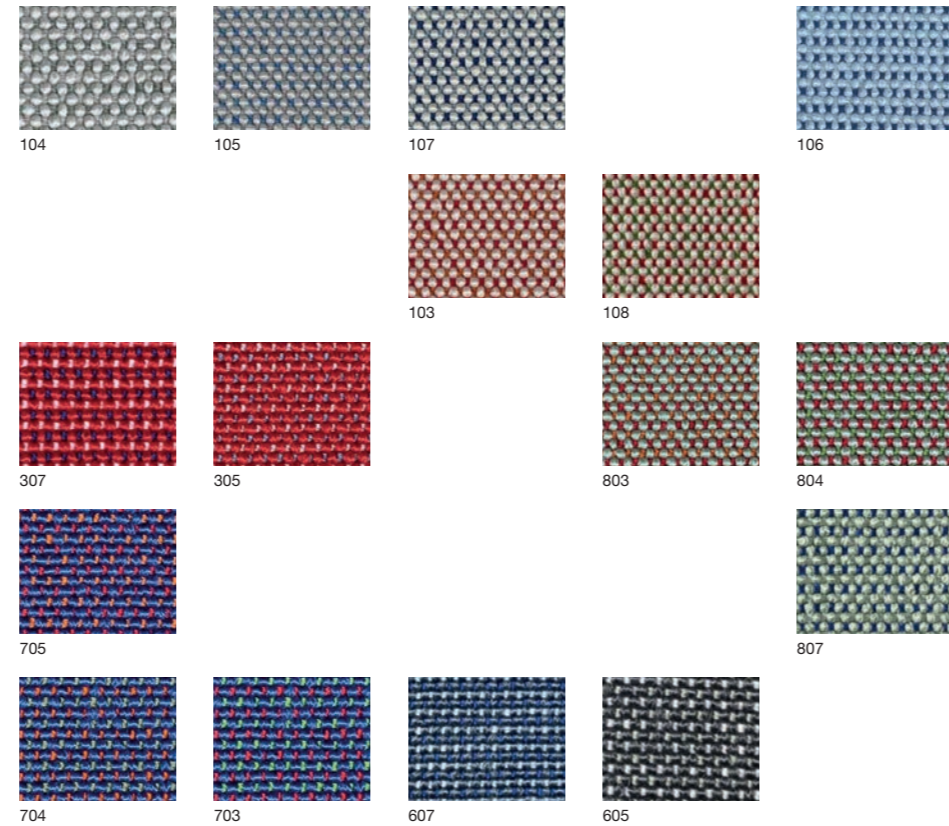




b-chew bit



b-chew trio



Il primo tessuto bi-elastico riciclato fire retardant made in Italy è indoor e outdoor. Con questa premessa nasce b-chew, tessuto ecosostenibile riciclato e riciclabile. Infinite sfumature nei suoi 53 colori danno vita a bit, duo e trio, le tre armature che lo rendono unico nel suo genere. Etico e poliedrico, sa adattarsi ad ogni forma, enfatizzando le infinite possibilità progettuali in avvenire.

The first bi-elastic fire retardant fabric made in Italy is indoor and outdoor. B-chew originate with this premise: eco-sustainable, recycled and recyclable fabric made out of recycled PET. Infinite shades in its 53 colors give life to bit, duo and trio, the three different structures that make them unique in its kind. Ethical, multifaceted, b-chew can adapt to any shape, emphasizing the infinite design possibilities it allows.



b-chew duo

