

abitex

b-green grs groviglio 04434



fireproof



imo-med



sound absorbent



recycled



standard 100



year guarantee

La luce discreta spiava e le ombre inventava. “Rino Gaetano”

Un groviglio di fili fantasia inediti tessono armoniosi un Bouclé decisamente fuori dal ordinario.

Interamente prodotto in Italia da bottiglie di plastica riciclate - GRS, sa mantenere elevate performance al fuoco e all’usura pur mantenendo un raffinato gioco di chiaroscuro sulla sua imprevedibile superficie.

Le sue ventuno tonalità evocano una soave percezione sensoriale che diventa focus centrale della progettazione. Adatto ad hotel, ristoranti e navi ma anche alla casa.

Diamo il benvenuto a “b-green GRS” nel suo disegno “Groviglio”.



La luce discreta spiava e le ombre inventava.

“Rino Gaetano” A tangle of unique fantasy yarns harmoniously woven into an extraordinary bouclé.

Entirely produced in Italy from recycled plastic bottles - GRS, it maintains high performance against fire and wear while retaining a refined play of light and shadow on its unpredictable surface.

Its 21 shades evoke a soft sensory perception that becomes the central focus of the design.

Suitable for hotels, restaurants and ships, but also for home use.

We welcome “b-green GRS” in its “Groviglio” design.



abitex.lab

abitex

abitex srl

headquarter
via del cristo 84
33044 manzano
ud – italy

legal address
via enrico fermi 9
35010 cadoneghe
pd – italy

t +39 0432 746060
f +39 0432 746035
cf/p. iva/vat IT04453620280
www.abitex.eu - info@abitex.eu

b-green grs groviglio 04434



IT
codice doganale
54077300.
utilizzo
imbottiti, assorbimento acustico.
caratteristiche
42% poliestere - 58% poliestere riciclato, altezza cm ± 140, peso ± 720 gr/m².
tintura
il prodotto è tinta in pezza.
lunghezza pezza
circa 25 mt., disponibile anche al taglio con maggiorazione.
abrasione
secco 4, feucht 4, ISO 105 X12.
solidità allo sfregamento
orbello 2 mm, trama 3 mm, ISO 13936-2.
pilling
4/5, ISO 12945-2.
sostenibilità
R.E.A.C.H.; oeko-tex; GRS.
resistenza al fuoco
TIM - UNI 9175; EN 1021 part. 1/2; BS 7176 low hazard; BS 5852 crib 5; NF D 60 013 (AM 18); NF P 92 507 M1; NFPA 260 Class 1; California TB 117-2013; IMO FTP Code 307 part 8.
attenzione
sono ammesse leggere differenze di colore tra differenti partite, non ci assumiamo nessuna responsabilità per il trasferimento di colore/pigmenti causato da abbigliamento e accessori, le schede tecniche vengono costantemente aggiornate sul sito, pertanto vi invitiamo a verificare online i dati del prodotto su www.abitex.eu

DE
zolltarifnummer
54077300.
verwendung
polstermöbel, schallabsorption.
merkmale
42% polyester - 58% recyceltes polyester, breite cm ± 140, gewicht ± 720 gr/m².
färbung
stückgefärbt.
länge des luchs
ca. 25 lm., auch geschnitten gegen aufpreis erhältlich.
abriebbeständigkeit
> 150.000 zyklen, ISO 12947-2.
farbbeständigkeit gegenüber licht
4/5, ISO 105 B02.
reibecheith
trocken 4, feucht 4, ISO 105 X12.
nachtschiebewiderstand
kette 2 mm, trama 3 mm, schuss 3 mm, ISO 13936-2.
pillverhalten
4/5, ISO 12945-2.
nachhaltigkeit
R.E.A.C.H.; oeko-tex; GRS.
resistenz gegen feuer
TIM - UNI 9175; EN 1021 part. 1/2; BS 7176 low hazard; BS 5852 crib 5; NF D 60 013 (AM 18); NF P 92 507 M1; NFPA 260 Class 1; California TB 117-2013; IMO FTP Code 307 part 8.
achtung
leichte farbunterschiede zwischen den einzelnen partien sind zulässig, wir übernehmen keine verantwortung für verfarbungen/farblecken, die durch kleidung und accessoiren verursacht werden, wir empfehlen, die technischen datenblätter für alle produkte unter www.abitex.eu zu prüfen.

FR
code douanier
54077300.
utilisation
meubles rembourrés, absorption acoustique.
caractéristiques
42% polyester - 58% polyester recyclé, hauteur cm ± 140, largeur ± 720 g/m².
teinture
le produit est teinté en pièce.
longueur des pièces
environ 25 m. lm., disponible également à la coupe avec une majoration.
résistance à l'abrasion
> 150.000 rotations, ISO 12947-2.
solidité et résistance des couleurs à la lumière
4/5, ISO 105 B02.
solidité et résistance au frottement
sec 4, humide 4, ISO 105 X12.
résistance à la couture
chaîne 2 mm, trame 3 mm, ISO 13936-2.
boulochage
4/5, ISO 12945-2.
pillabilité
R.E.A.C.H.; oeko-tex; GRS.
résistance au feu
TIM - UNI 9175; EN 1021 part. 1/2; BS 7176 low hazard; BS 5852 crib 5; NF D 60 013 (AM 18); NF P 92 507 M1; NFPA 260 Class 1; California TB 117-2013; IMO FTP Code 307 part 8.
attention
de légères différences de couleur entre différents lots sont admises, nous ne nous assumons aucune responsabilité par rapport au transfert de couleurs/pigments éventuellement provoqué par les vêtements et les accessoires. nous vous conseillons de vérifier les fiches techniques de tous les produits sur www.abitex.eu

RU
таможенный кодекс
54077300.
использование
мягкая мебель, звукопоглощающий.
характеристики
42% полиэстер - 58% переработанный полиэстер, высота в см ± 140, вес ± 720 г/м².
краситель
продукт окрашивается в мотках.
длина детали
о 25 погонных метрах. также доступны в разрезе при условии дополнительной оплаты.
устойчивость к изнашиванию
> 150.000 цикл, ISO 12947-2.
светостойкость
4/5, ISO 105 B02.
устойчивость к истиранию
сухой 4, влажный 4, ISO 105 X12.
прочность швов
основа 2 мм, уток 3 мм, ISO 13936-2.
пиллинг
4/5, ISO 12945-2.
устойчивость
R.E.A.C.H.; oeko-tex; GRS.
огнестойкость
TIM - UNI 9175; EN 1021 part. 1/2; BS 7176 low hazard; BS 5852 crib 5; NF D 60 013 (AM 18); NF P 92 507 M1; NFPA 260 Class 1; California TB 117-2013; IMO FTP Code 307 part 8.
внимание
допускаются незначительные различия в цвете между различными частями, мы не несем ответственности за передачу цвета / пигмента при нанесении на одежду и аксессуары. мы рекомендуем проверить технические паспорта всех продуктов www.abitex.eu

ZH
海关编号
54077300.
用途
填充物, 吸音。
特性
42% 涤纶 - 58% 再生聚酯, 高度 ± 140 cm, 重量 ± 720 gr/m².
染色
匹染布。
布匹长度
约25米, 也可提供付费切割。
耐磨性能
> 150,000 转, ISO 12947-2。
耐光色牢度
4/5, ISO 105 B02。
耐摩擦色牢度
干摩擦 4, 湿摩擦 4, ISO 105 X12。
缝线滑移
纱向 2 mm, 纱向 3 mm, ISO 13936-2。
起球
4/5, ISO 12945-2。
可持续性
R.E.A.C.H.; oeko-tex; GRS。
耐火性能
TIM - UNI 9175; EN 1021 part. 1/2; BS 7176 low hazard; BS 5852 crib 5; NF D 60 013 (AM 18); NF P 92 507 M1; NFPA 260 Class 1; California TB 117-2013; IMO FTP Code 307 part 8。
注意
不同批次之间允许存在轻微色差, 我们对由于服装或配饰造成的颜色/颜料的染色不承担任何责任。 请登录 www.abitex.eu 网站参考所有产品的相关技术数据表。



abitex
b-green grs groviglio - 04434



abitex



100



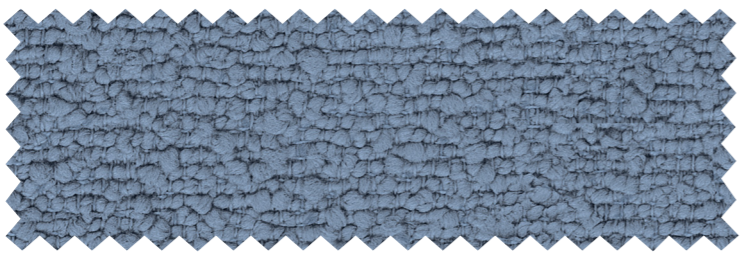
101



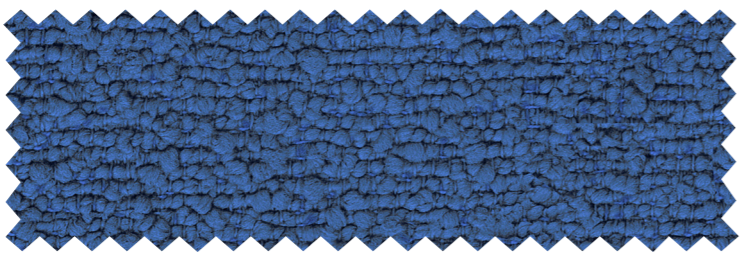
111



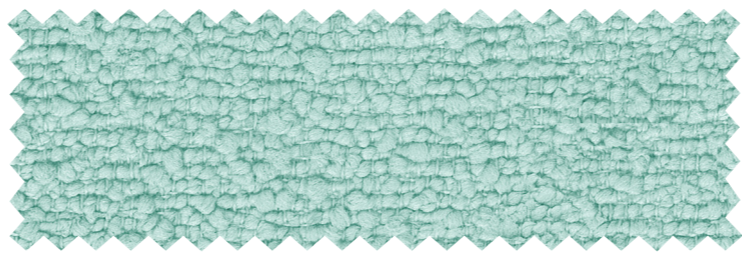
105



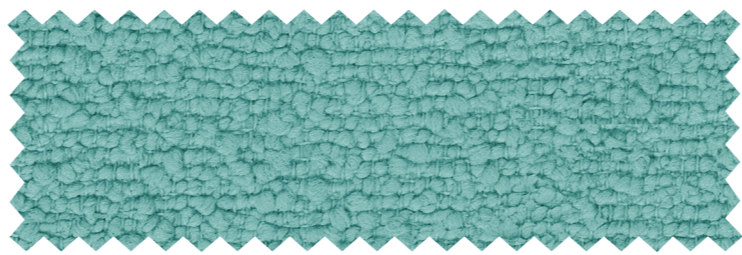
703



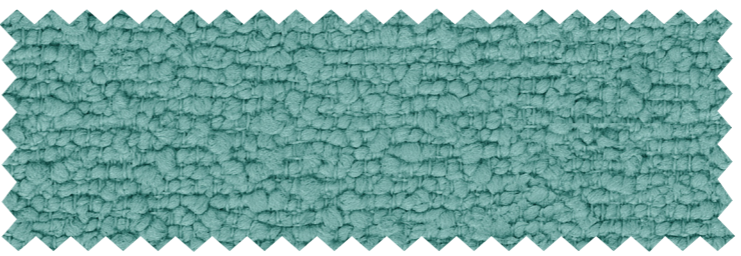
705



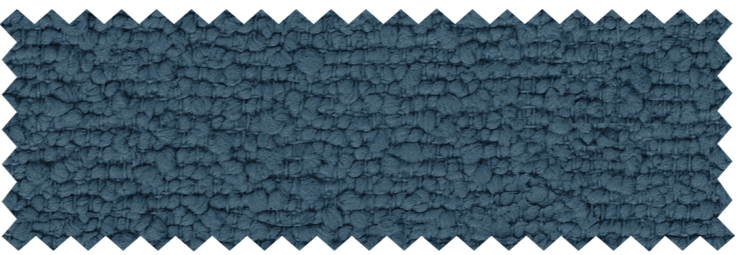
700



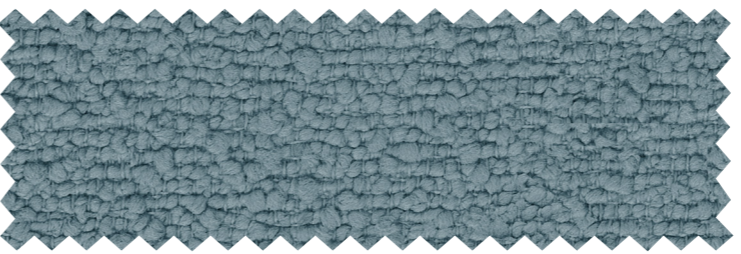
701



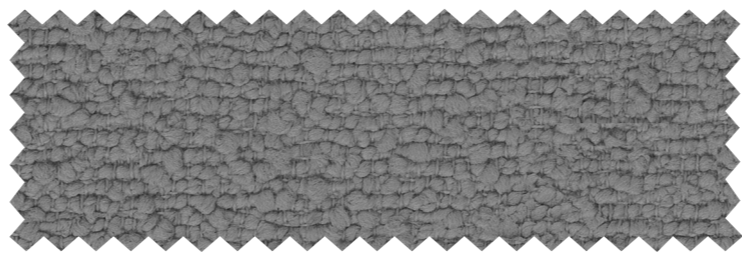
808



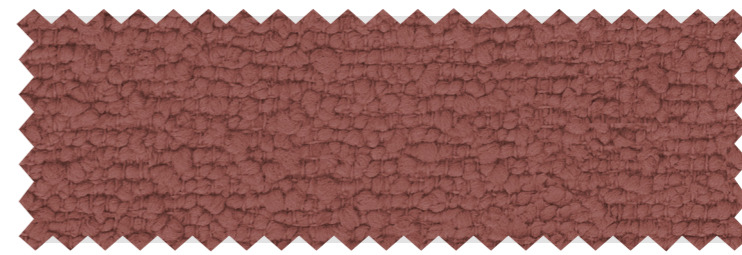
702



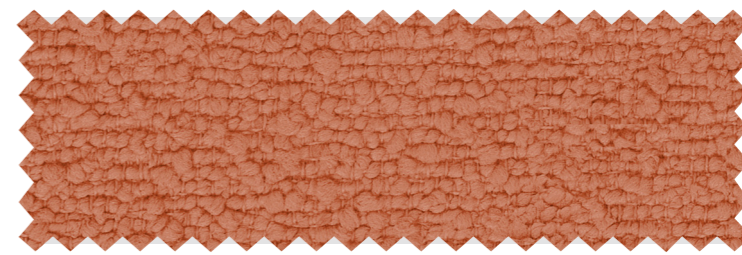
807



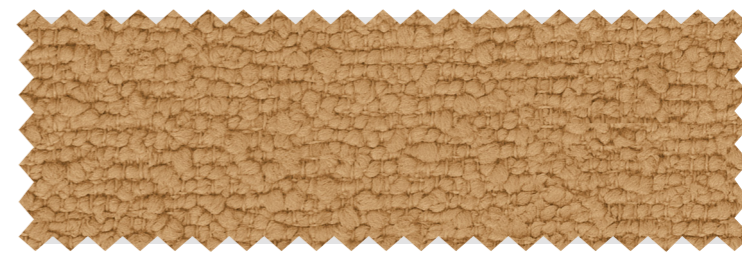
600



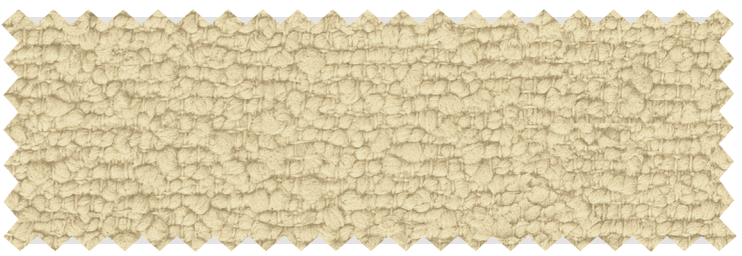
402



401



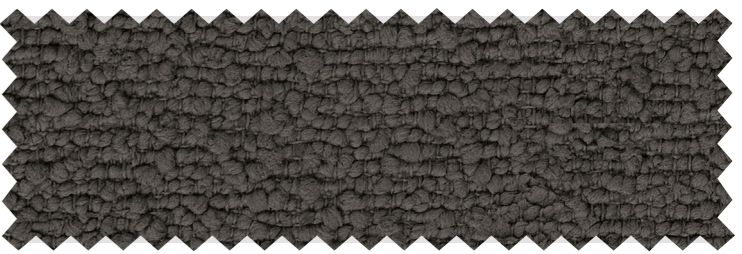
400



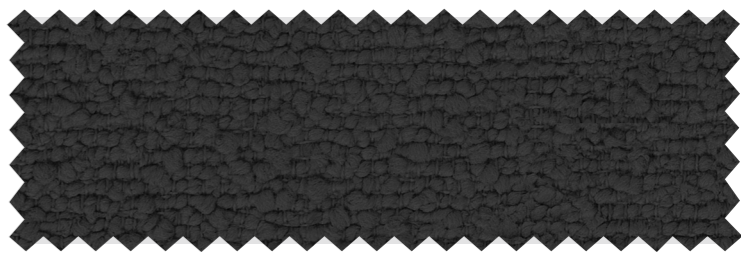
103



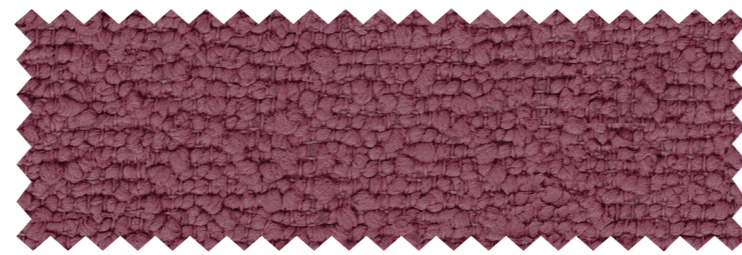
404



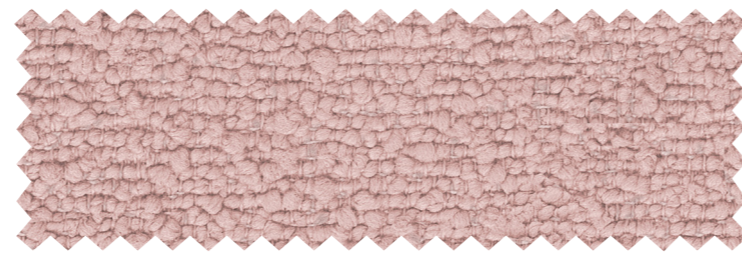
603



200



002



001