

abitex



fireproof



imo-med



5 year guarantee

angel combo 08120

Centoquarantaquattro.
Nonostante i movimenti
del ragno che facevano
oscillare la tela era riuscito
a contarne i fili.
Solo un gioco – si disse –
nell’attesa che si facesse
viva lei, il suo angelo
dagli occhi fondi.

Un gioco che presto si era
trasformato in allucinazione.

Aveva immaginato
i fili allungarsi ancora, vibrare
come tra le mani di un’arpista.

Legarsi uno all’altro e poi
trasformarsi in un tessuto per
tovaglie e sedie di un ristorante
dove cenare insieme.

Aveva contato e contato ancora.
Perso il conto, il filo del discorso,
il suo appuntamento.

One hundred forty-four.
Despite the spider’s
movements that rocked
the web, he was able
to count its threads.
It is only a game
- he told himself -
waiting for her,
his deep-eyed angel,
to show up

A game that soon becomes
hallucination.
He imagined the strings
stretch out again, vibrate as
if in the hands of a harpist.
Connecting one another
and then turning into fabric
for tablecloths
and restaurant chairs where
one could dine together.

He counted
and counted again.
But he failed keeping track
of the final number,
lost his train of thought,
and missed his appointment.



abitex.lab

abitex

abitex srl

headquarter
via del cristo 84
33044 manzano
ud – italy

legal address
via enrico fermi 9/11
35010 cadoneghe
pd – italy

t +39 0432 746060
f +39 0432 746035
cf/p. iva/vat IT04453620280
www.abitex.eu - info@abitex.eu

angel combo 08120



IT
codice doganale
54072011.
utilizzo
tendaggi, imbottiti.
caratteristiche
100% polipropilene, altezza cm ± 140,
peso ± 350 gr/m².
tintura
il prodotto è tinto in massa.
lunghezza pezzi
circa 35 mt., disponibile anche al taglio con
maggiorazione.
abrasione
> 50.000 cicli, ISO 12947-2.
solidità alla luce
5, ISO 105 B02.
solidità allo sfregamento
secco 5, umido 4/5, ISO 105 X12.
resistenza alla cucitura
ordito 4 mm, trama 2 mm, ISO 13936-2.
pilling
4-5, ISO 12945-2.
resistenza al fuoco
1M - UNI 9175; EN 1021 part 1/2;
NF-D 60 013 (AM 18); BS 5852 crib 5;
NFFA 260 Class 1; California TB 117-2013;
IMO MED 3.20 - FTP Code 307 part 8.
attenzione
sono ammesse leggere differenze di colore tra
differenti partite. le schede tecniche vengono
costantemente aggiornate sul sito, pertanto vi
invitiamo a verificare online i dati del prodotto su
www.abitex.eu

EN
customs code
54072011.
use
curtains, upholstered furniture.
features
100% polypropylene, width cm ± 140,
weight ± 350 g/m².
dyeing
solution dyed product.
roll length
approx. 35 lm., can also be cut-to-length at an extra
cost.
abrasion resistance
> 50.000 rubs, ISO 12947-2.
colour fastness to light
5, ISO 105 B02.
fastness to rubbing
dry 5, wet 4/5, ISO 105 X12.
seam slippage
warp 4 mm, weft 2 mm, ISO 13936-2.
pilling
4-5, ISO 12945-2.
fire resistance
1M - UNI 9175; EN 1021 part 1/2;
NF-D 60 013 (AM 18); BS 5852 crib 5;
NFFA 260 Class 1; California TB 117-2013;
IMO MED 3.20 - FTP Code 307 part 8.
attention
slight colour differences between different batches
are allowed, as technical data sheets are updated
from time to time, we invite you to verify the latest
document published for each item on the website
www.abitex.eu

DE
zolltarifnummer
54072011.
verwendung
vorhänge, polstermöbel.
merkmale
100% polypropylen, breite cm ± 140,
gewicht ± 350 gr/m².
färbung
spinngefärbt.
länge des luchs
ca. 35 lm., auch geschnitten gegen aufpreis
erhältlich.
abriebbeständigkeit
> 50.000 zyklen, ISO 12947-2.
farbbeständigkeit gegenüber licht
5, ISO 105 B02.
reibebehalt
trocken 5, feucht 4/5 mm, ISO 105 X12.
nahtschleibewiderstand
kette 4 mm, schuss 2 mm, ISO 13936-2.
pillverhalten
4-5, ISO 12945-2.
feuerbeständigkeit
1M - UNI 9175; EN 1021 part 1/2;
NF-D 60 013 (AM 18); BS 5852 crib 5;
NFFA 260 Class 1; California TB 117-2013;
IMO MED 3.20 - FTP Code 307 part 8.
achtung
leichte farbumterschiede zwischen den einzelnen
partien sind, wir empfehlen, die technischen
datenblätter für alle produkte unter www.abitex.eu
zu prüfen.

FR
code douanier
54072011.
utilisation
rideaux, meubles rembourrés.
caractéristiques
100% polypropylène, hauteur cm ± 140,
largeur ± 350 g/m².
teinture
le produit est teinté dans la masse.
longueur des pièces
environ 35 m. lm., disponible également à la coupe
avec une majoration.
résistance à l'abrasion
> 50.000 rotations, ISO 12947-2.
solidité et résistance des couleurs à la lumière
5, ISO 105 B02.
solidité et résistance au frottement
sec 5, humide 4/5, ISO 105 X12.
résistance à la couture
chaîne 4 mm, trame 2 mm, ISO 13936-2.
boulochage
4-5, ISO 12945-2.
résistance au feu
1M - UNI 9175; EN 1021 part 1/2;
NF-D 60 013 (AM 18); BS 5852 crib 5;
NFFA 260 Class 1; California TB 117-2013;
IMO MED 3.20 - FTP Code 307 part 8.
attention
de légères différences de couleur entre différents lots
sont admises, nous vous conseillons de vérifier les
fiches techniques de tous les produits sur
www.abitex.eu

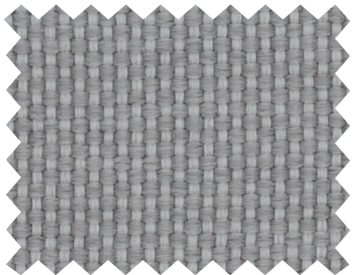
ES
código aduanero
54072011.
utilización
cortinas, muebles tapizados.
características
100% polipropileno, ancho ± 140 cm,
peso ± 350 gr/m².
tinte
tintura en masa.
largo de las piezas
aprox. 35 m., también disponible al corte con
recargo.
esistencia a la abrasión
> 50.000 ciclos martindale, ISO 12947-2.
solidez de los colores a la luz
5, ISO 105 B02.
solidez al frote
seco 5, húmedo 4/5, ISO 105 X12.
resistencia al deslizamiento de hilos
ordibre 4 mm, trama 2 mm, ISO 13936-2.
formación de bolitas
4-5, ISO 12945-2.
resistencia al fuego
1M - UNI 9175; EN 1021 part 1/2;
NF-D 60 013 (AM 18); BS 5852 crib 5;
NFFA 260 Class 1; California TB 117-2013;
IMO MED 3.20 - FTP Code 307 part 8.
atención
son admisibles ligeras diferencias de color entre
partidas diversas, se aconseja verificar las fichas
técnicas de todos los productos en www.abitex.eu

AR
كود جمركي
54072011.
مادحتستعمال
تنداج، مبلات ممتلئة.
تفاصيل
100% بوليپروپيلين، ارتفاع ± 140 سم،
وزن ± 350 جم/م².
صبغة
المنتج مصبغ في الكتلة.
طول قطع
حوالي 35 متر، متوفر أيضًا للقطع مع
زيادة في السعر.
مقاومة التآكل
> 50.000 دورة، ISO 12947-2.
ثبات اللون ومقاومة الضوء
> 50.000 دورة، ISO 105 B02.
مقاومة الاحتكاك
جاف 5، رطب 4/5، ISO 105 X12.
مقاومة التمزق
سلسلة 4 مم، نسيج 2 مم، ISO 13936-2.
تآكل
4-5، ISO 12945-2.
مقاومة الحريق
1M - UNI 9175; EN 1021 part 1/2;
NF-D 60 013 (AM 18); BS 5852 crib 5;
NFFA 260 Class 1; California TB 117-2013;
IMO MED 3.20 - FTP Code 307 part 8.
تنبيه
توجد فروق لونية طفيفة بين الدفعات
مختلفة، نوصي بالتحقق من البيانات
التقنية لجميع المنتجات على
www.abitex.eu

ZH
海关编号
54072011.
用途
窗帘，填充物。
特性
100% 聚丙烯，高度 ± 140 cm，重量 ± 350 gr/m².
染色
原液染色布。
布匹长度
约35米，也可提供付费切割。
耐磨性能
> 50,000 转，ISO 12947-2。
耐光色牢度
5, ISO 105 B02。
耐摩擦色牢度
干摩擦 5, 湿摩擦 4/5, ISO 105 X12。
缝线滑移
经向 4 mm, 纬向 2 mm, ISO 13936-2。
起球
4-5, ISO 12945-2。
耐火性能
1M - UNI 9175; EN 1021 part 1/2;
NF-D 60 013 (AM 18); BS 5852 crib 5;
NFFA 260 Class 1; California TB 117-2013;
IMO MED 3.20 - FTP Code 307 part 8。
注意
不同批次之间允许存在轻微色差。
请登录 www.abitex.eu 网站参考所有产品的相关
技术数据表

RU
таможенный кодекс
54072011.
использование
шторы, мягкая мебель.
характеристики
100% полипропилен, высота в см ± 140,
вес ± 350 г/м².
краситель
продукт окрашивается насыльно.
длина детали
о 35 погонных метрах, также доступны в разрезе
при условии дополнительной оплаты.
устойчивость к изнашиванию
> 50.000 циклов, ISO 12947-2.
светостойкость
5, ISO 105 B02.
устойчивость к истиранию
сухой 5, влажный 4/5, ISO 105 X12.
прочность швов
основа 4 мм, уток 2 мм, ISO 13936-2.
пиллинг
4-5, ISO 12945-2.
огнестойкость
1M - UNI 9175; EN 1021 part 1/2;
NF-D 60 013 (AM 18); BS 5852 crib 5;
NFFA 260 Class 1; California TB 117-2013;
IMO MED 3.20 - FTP Code 307 part 8.
внимание
допускаются незначительные различия в цвете
между различными частями. мы рекомендуем
проверить технические паспорта всех продуктов
www.abitex.eu

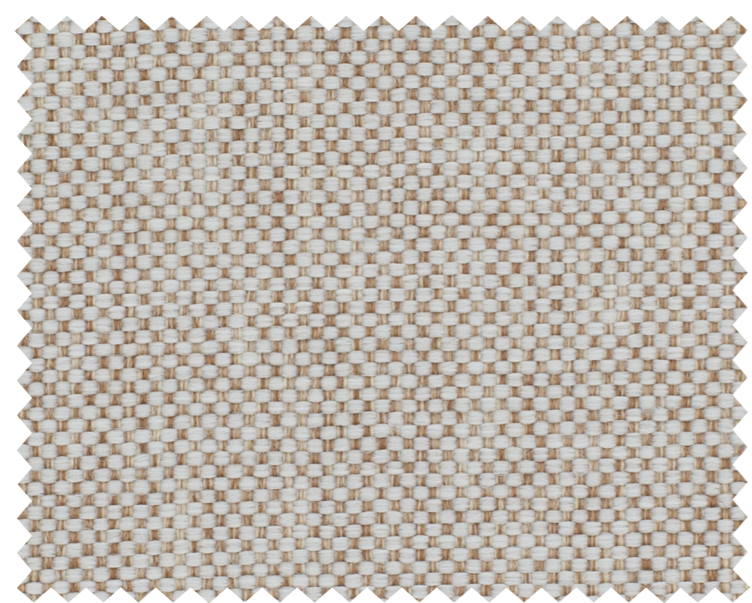
abitex
angel_combo - 08120



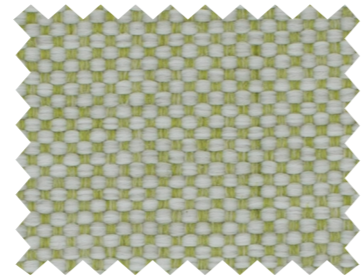
101



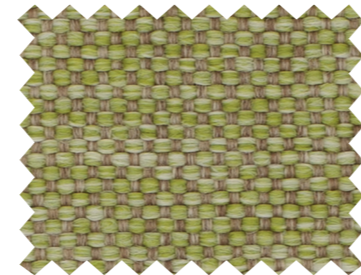
111



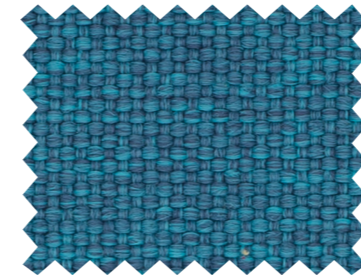
102



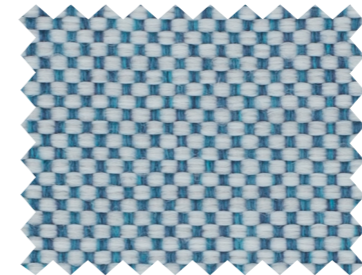
801



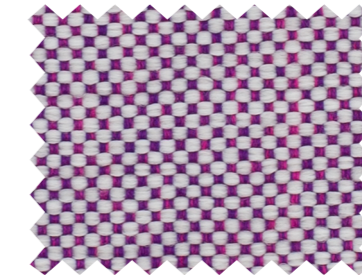
803



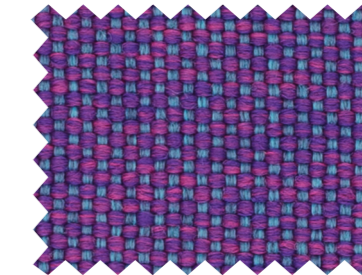
700



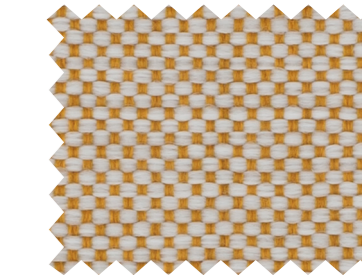
701



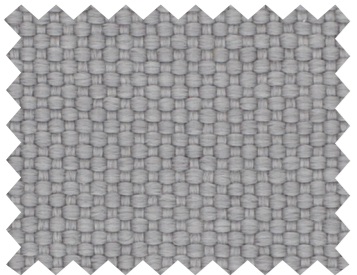
001



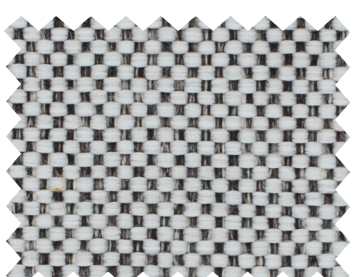
901



501



600



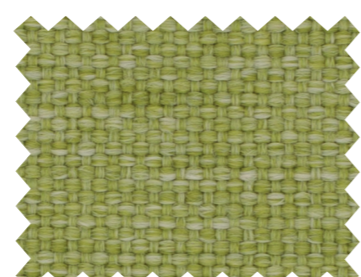
601



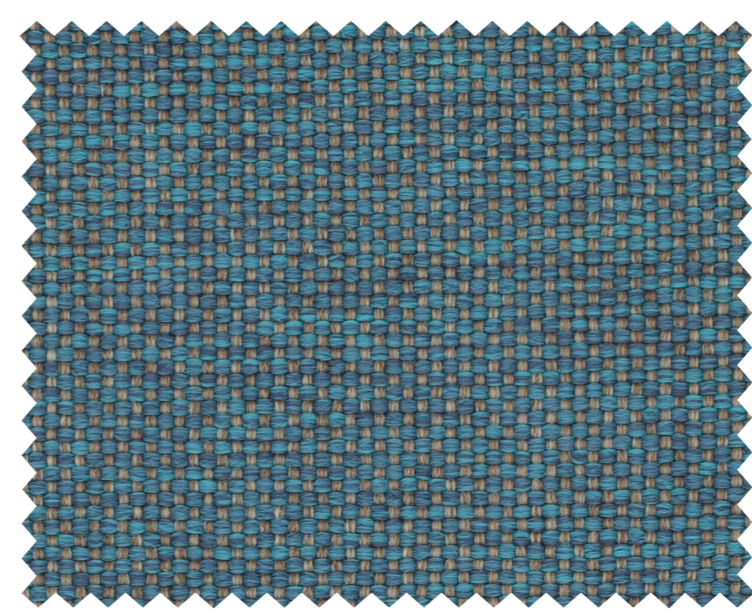
401



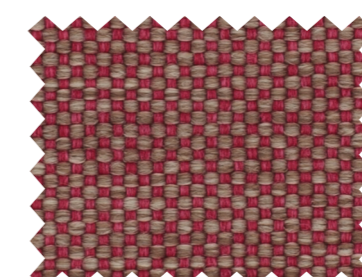
400



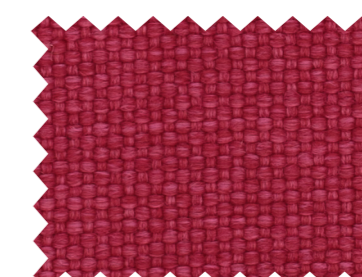
800



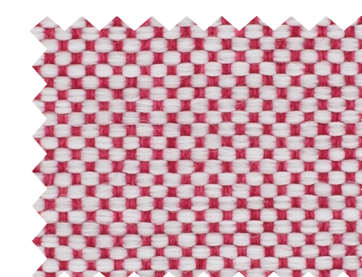
706



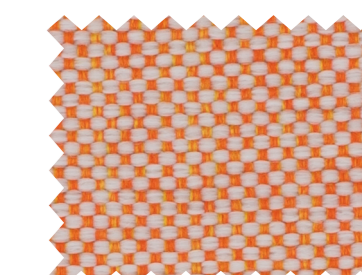
302



300



301



309



201



407



402



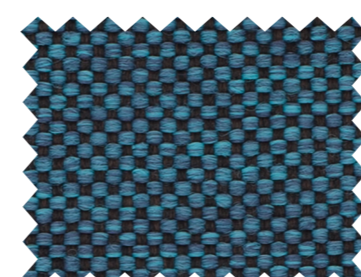
404



703



702



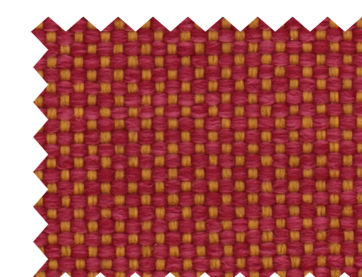
705



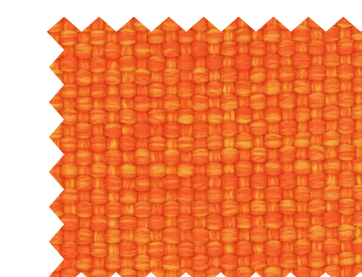
707



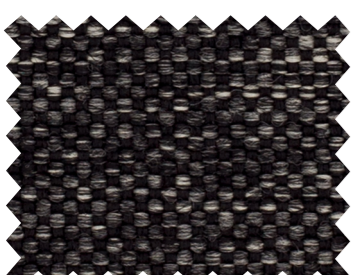
303



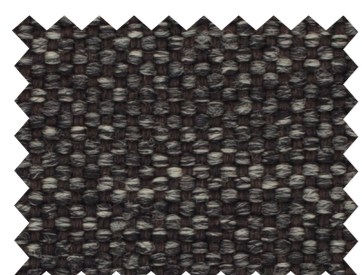
304



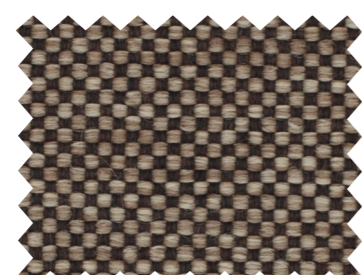
307



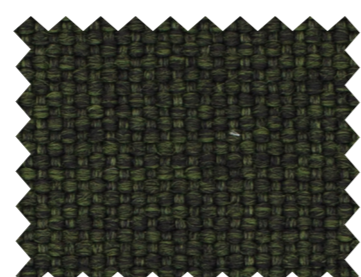
203



408



403



802



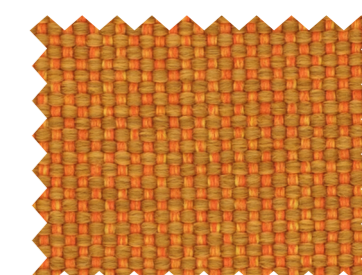
311



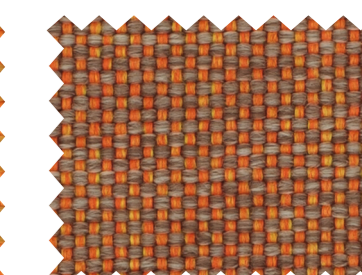
305



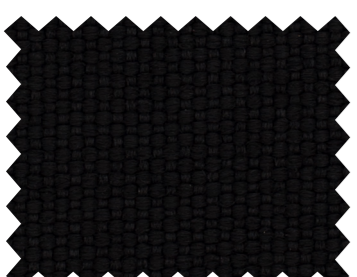
306



310



308



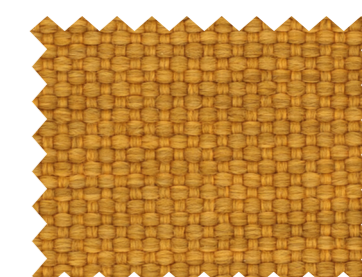
200



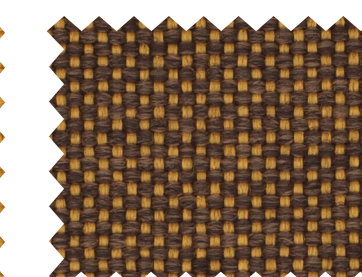
406



405



500



503

abitex